

## LIMITED WARRANTY

## MOUNTING INSTRUCTION WINCH 91

1. Remove screw (1).
2. Remove cap washer (2).
3. Remove circlip (3).
4. Pos. 4-13 can now be removed, and the winch base (14) is ready for next step.
5. Mark location of the bolt holes using the winch base as a template.
6. Remove the winch base. Be sure that no dust comes into contact with the winch while drilling the bolt holes.
7. Drill the bolt holes  $\varnothing 6.5\text{mm}$ .
8. Clean the area.
9. Apply a light coat of bedding compound, ensuring that each hole is bedded.
10. Fasten the winch base into place using 6 pcs M6 countersunk head screws. Use large washers or a backing plate.
11. Assemble in reverse order.
12. Check that the winch is functioning correctly.

## SERVICE INSTRUCTION WINCH 91

Maintenance interval 1-2 years, depending on operating conditions.

(Dismantling procedure according to Mounting Instruction no. 1-4 above)

1. Clean all moving parts with "white spirits"/ "mineral spirits".
2. Check pawls & springs (5,13) for wear and replace if necessary.
3. Reassemble the winch lightly greasing all moving parts.

Service Kit No. 14 (part no. 710014 ) contains service parts for this winch.

- 1.1 Andersen issues a three-year warranty on all their products covering manufacturing and material defects on condition that the products are used in normal fashion. The warranty shall apply for three years from the moment ANDERSEN sell the product concerned (to the first buyer).
- 1.2 Within the period of the warranty, and in accordance with the terms of the warranty, ANDERSEN undertake to replace or repair all defective components, which have been used in normal fashion.
- 1.3 The warranty is however subject to the limitations and exceptions outlined below.
 

**Conditions and limitations:**
- 2.1 ANDERSEN's liability shall be limited to repair or replacement of components, which are defective owing to manufacturing or material defects.
- 2.2 ANDERSEN assume no other liability than this, not even liability for indirect losses caused by defect concerned, including operating losses, loss of profits, or damage caused to real property or moveable property occurring while the product concerned is in the possession of the Buyer.
- 2.3 The Buyer alone shall bear the responsibility and risk involved as to whether the products are suitable for the application intended. ANDERSEN assume no liability in this connection.
- 2.4 ANDERSEN assume no liability for defects which occur due to use of their products for purposes for which they are not intended, or for defects which occur owing to incorrect installation, corrosion, ultraviolet degradation, lack of maintenance, or any alteration or repair of the product carried out incorrectly by the Buyer. Finally, ANDERSEN assume no liability for normal wear and tear, or for depreciation in value.
- 2.5 ANDERSEN do not assume any liability for service carried out by anyone other than authorised ANDERSEN representatives, unless such service is carried out pursuant to guidelines laid down by ANDERSEN and in accordance with good craftsmanship.
- 2.6 The buyer shall inform ANDERSEN in writing of any defects with no undue delay once defects have been registered. Products being dealt with under the warranty shall be returned to ANDERSEN for repair unless any other agreement has been reached in writing.
- 2.7 ANDERSEN shall not cover costs incurred by the Buyer in connection with the transport or wages involved in a warranty case. The Buyer in full shall meet such costs.
- Exceptions:**
- 3.1 The warranty is only valid for one year in respect of components bought for the products concerned, such as electric motors, electric equipment, hydraulic pumps, motors and valves.
- 3.2 ANDERSEN assume no liability for consequential damage of ships, equipment, property or people caused by defects in ANDERSEN products.
- 3.3 The company's products are subject to continuous development, and consequently ANDERSEN reserve the right to change designs and specifications without prior notice.

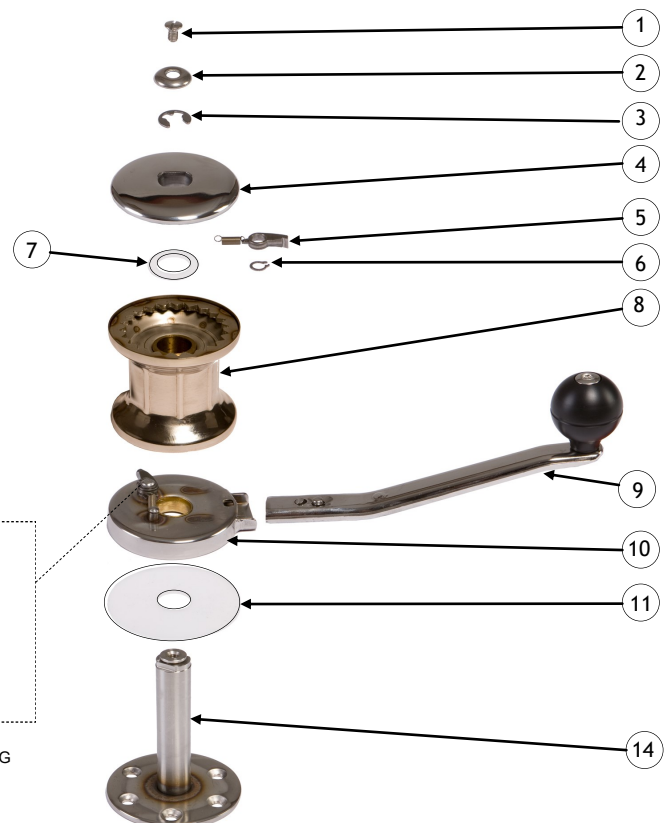
## PARTS LIST WINCH 91 ver 1.0

POS	QTY	DESCRIPTION	PART NO.
1	1	SCREW M6 X 10	DIN964-A4-M6X10
2	1	CAP WASHER	964600
3	1	CIRCLIP $\varnothing 10$	DIN6799-10
4	1	WINCH TOP 91	961100
5	1	PAWL W/SPRING	962001
6	1	CIRCLIP	DIN471-A2-A8
7	1	WASHER $\varnothing 30$	961200
8	1	WINCH DRUM 91	960703
9	1	WINCH HANDLE 91	510911
10	1	DRIVE SOCKET	961405
11	1	WASHER $\varnothing 79$	961600
12	1	CIRCLIP	DIN471-A2-A8
13	1	PAWL W/SPRING	962001
14	1	WINCH BASE 91	961300



DETAIL, PAWL MOUNTING DIRECTION.

## EXPLODED VIEW WINCH 91



**WORLD WIDE DISTRIBUTION & SERVICE**

(FOR UPDATED DISTRIBUTOR LIST, PLEASE SEE [WWW.ANDERSENWINCHES.COM](http://WWW.ANDERSENWINCHES.COM))

Manufactured by:

**ANDERSEN Winches**  
**DK-7100 Vejle**

**DENMARK**

[www.andersenwinches.com](http://www.andersenwinches.com)

E-mail: [info@andersenwinches.com](mailto:info@andersenwinches.com)

Manual  
**WINCH 91**  
ver. 1.0

