



# Smartfind M10

## AIS CLASS B TRANSPONDER

### USER MANUAL



Smartfind M10 & M10W  
AIS Transponder  
User Manual

## **General Information**

### **i. Copyright**

The entire contents of this instruction manual, including any future updates, revisions, and modifications, shall remain the property of Netwave Systems B.V. at all times. Unauthorized copies or reproduction of this manual, either in part or whole, in any form of print and electronic media, is prohibited. The contents herein can only be used for the intended purpose of this manual.

### **ii. Disclaimer**

The information and illustrations contained in this publication are to the best of our knowledge correct at the time of going to print. We reserve the right to change specifications, equipment, installation and maintenance instructions without notice as part of our policy of continuous product development and improvement. No part of this publication may be reproduced, stored in a retrieval system or transmitted in any form, electronic or otherwise without permission in writing from Netwave Systems B.V.. No liability can be accepted for any inaccuracies or omissions in the publication, although every care has been taken to make it as complete and accurate as possible. This manual is applicable for McMurdo Smartfind M10 & M10W devices manufactured after January 2016.

### iii. **Safety Warning**



It is important to know that AIS is designed for the purpose of anti-collision and serves to complement navigation. It is not the absolute navigational equipment and does not replace any navigational system installed on board.



Any AIS device cannot guarantee monitoring and receiving signals from all vessels in the surroundings unless those vessels are equipped with AIS devices.



Never Switch on the AIS transponder without a VHF antenna connected.

## **RF Exposure Warning**

**WARNING:** This device generates and radiates RF electromagnetic energy. This device must be installed and operated according to the instructions contained in this manual. Failure to do so may result in product malfunction and/or exposure to potentially harmful levels of radio frequency radiation.

**WARNING:** Never operate this device unless it is properly connected to a VHF antenna. To maximise performance and minimise human exposure to RF energy, always mount the antenna at least 3m from the device.



The system has a Maximum Permissible Exposure (MPE) radius of 60cm from the antenna. This has been determined assuming the maximum power of the transmitter and using a standard half-wave monopole VHF antenna with a maximum gain of 3dBi and termination impedance of 50 ohms.

When installing the antenna and operating the equipment consider the following:

The antenna should be mounted at a minimum vertical distance of 5m above the deck in order to meet international safety directives on Maximum Permissible Exposure (MPE). Failure to adhere to these limits could expose persons within the radius to RF radiation in excess of the recommended MPE limits.

Higher gain VHF antennas will require a larger MPE radius.

Do not operate the unit when anyone is within the MPE radius of the antenna.

The antenna should not be co-located or operated in conjunction with any other transmitting antenna.



### **Wi-Fi Antenna warning for M10W**

Ensure that a minimum separation distance of 20cm is maintained between the Wi-Fi antenna and any personnel in the vicinity.



### **CORRECT POWER SOURCE**

An incorrect power source will damage the equipment and may even result in a fire.

Ensure that the correct power source is provided at all times.



**AVOID DIRECT CONTACT WITH RAIN OR SPLASHING WATER**

Electrical shock or fire could be resulted if water leaks into the equipment.



**AVOID USING CHEMICAL SOLVENTS TO CLEAN THE CASE**

As some solvents can damage the case material.



**NOTE/INFORMATION**

Throughout this manual this symbol indicates important information.

**iv. Product Category**

This product is categorized as “protected” in accordance with the requirements as defined in IEC 60945.



v. **Hardware / Software Version**

The model name, number, hardware information, and firmware (software) version of the transponder can be identified by using the McMurdo AIS CLASS B Configurator tool supplied. The software maintenance/upgrade of the transponder can be carried out on board via an USB interface and connection to a PC or laptop.

vi. **EC Declaration of Conformity**

Hereby Netwave Systems B.V. declares that the Type Z602 (M10) & Z603 (M10W) are in compliance with the essential requirements and other relevant provisions of Radio Equipment Directive 2014/53/EU. A copy of the Declaration of Conformity can be obtained on-line from <https://www.seasofsolutions.com/products/mcmurdo-smartfind-m10-m10w-ais-class-b-transponder/>. The EU Declaration of Conformity is applicable for the units from serial number – 21-205-001403 (for Z602) and 21-206-000254 (for Z603) afterward.



**vii. FCC Interference Statement**

NOTE: This equipment has been tested and found to comply with the limits for a Class A digital device, pursuant to part 15 of the FCC Rules. These limits are designed to provide reasonable protection against harmful interference when the equipment is operated in a commercial environment. This equipment generates, uses, and can radiate radio frequency energy and, if not installed and used in accordance with the instruction manual, may cause harmful interference to radio communications. Operation of this equipment in a residential area is likely to cause harmful interference in which case the user will be required to correct the interference at his own expense.

This device complies with Part 15 of the FCC Rules.

Operation is subject to the following two conditions:

- 1) This device may not cause harmful interference, and

2) This device must accept any interference received, including interference that may cause undesired operation

Any changes or modifications not expressly approved by Netwe Systems B.V. for compliance could void of the user's authority to operate the equipment.

### viii. **Disposal Instruction**

The Waste Electrical and Electronic Equipment (WEEE) Directive aims to minimize any adverse impact of electronic equipment on the environment, both during the product lifetime and when it becomes waste. Within the European Union this legislation is mandated by Directive 2002/96/EC, and there is similar legislation in most other continents. The directive applies to all electronic products such as IT, household appliances, portable electronics etc., and imposes requirements to collect, treat, recover and recycle each product at its end of life. Electronic end-user products must also carry a WEEE label (as below) and recovery and recycling information has to be provided to the recycler.



ix. **IMO Green Passport Ship Recycling Information**

Netwave Systems B.V. hereby declares potentially hazardous content in some of its electronic products. Small amounts of the following substances may be present: beryllium oxide, lithium, lead, brominated flame retardants, glass. In keeping with European directive 2002/96/EC (Waste Electronic and Electrical Equipment) and the provisions of IMO Resolution A.962(23) (Guidelines On Ship Recycling), Netwave Systems B.V. strongly recommends that its products, including any battery packs, be disposed of in a considerate and legal manner.

x. **Maintenance**

All servicing must be carried out by an Netwave Systems B.V. approved service agent. Always call your nearest agent

and talk to their service department before returning equipment. You can find your nearest service agent from:

- The McMurdo web site:  
[www.seasofsolutions.com/](http://www.seasofsolutions.com/)
- You can also send an email to [customer.service@seasofsolutions.com](mailto:customer.service@seasofsolutions.com) and someone will be in touch to answer your service and support questions.
- Or contact our offices:  
Netwave Systems B.V.  
Blauw-roodlaan 100,  
2718 SJ Zoetermeer, Netherlands  
Phone: +31 (0) 8811 81500

## **Contact Information**

For sales, services, and technical supports, please contact your local Netwave Systems representatives or Netwave Systems B.V at [www.seasofsolutions.com](http://www.seasofsolutions.com) or email to [customer.service@seasofsolutions.com](mailto:customer.service@seasofsolutions.com)

## xi. **Licensing and Maritime Mobile Service**

### **Identity (MMSI)**

**IMPORTANT:** In most countries the operation of an AIS unit is included under the vessel's marine VHF licence provisions. The vessel on to which the AIS unit is to be installed must therefore possess a current VHF radiotelephone licence which lists the AIS system and the vessel Call Sign and MMSI number. An MMSI number is required in order for the device to operate.

Please contact the relevant authority in your country for more information.

Use of this equipment requires an user licence from the national authority responsible for frequency allocation. Please check with the individual countries licensing authority to confirm the exact operational requirements.

M10 & M10W may be operated in the following EC countries:

AT	BE	BG	CH	CY	CZ
DE	DK	EE	ES	FI	FR
GB	GR	HU	IE	IS	IT
LT	LU	LV	MT	NL	NO
PO	PT	RO	SE	SI	SK

**CH: In the territories of Switzerland and the Principality of Liechtenstein, this equipment cannot be operated with the exception of on the Rhine between Rheinfeld and Kembs.**

## WARNING!

**WARNING:** The transponder must be installed and configured in conformity with the provided instructions in the manual in order to maximize the device performance.

**WARNING:** Please bear in mind that not all vessels are equipped with AIS transponders and therefore may not be visible to this transponder. Likewise, certain conditions, such as device malfunction, the environment, improper use, and overcrowded port traffic, may exist whereby the vessel equipped with this AIS transponder is not visible to other AIS transponders.

**WARNING:** DO NOT DISASSEMBLE OR MODIFY THE EQUIPMENT. Improper disassembly or modification could cause personal injury and will invalidate the guarantee.

**WARNING:** While most of the installation can be performed by the owner or the crew, a final commissioning can be done by your local agent/dealer when needed or required. Netwave Systems and the local agent/dealer will not bear any responsibilities over any damages resulted from improper installation by an unauthorized agent/dealer.

### FOR USERS IN THE UNITED STATES OF AMERICA ONLY

**WARNING:** It is a violation of the rules of the Federal Communications Commission to input an MMSI that has not been properly assigned to the end user, or to otherwise input any inaccurate data in this device.

★ The entry of static data into this device shall be performed by the vendor of the device or by an appropriately qualified person in the business of installing marine communications equipment on board vessels.

★ Instructions on how to accurately enter and confirm static data in the device can be found in this user manual.



## TABLE OF CONTENT

<b>1</b>	<b>SYSTEM OVERVIEW</b> .....	<b>21</b>
1.1	PRODUCT DESCRIPTION .....	21
1.2	EQUIPMENT IN THE BOX.....	24
1.3	EXTERNAL CONNECTIONS.....	25
1.4	WHAT IS AIS?.....	26
1.5	AIS CLASS B MESSAGE TYPES .....	28
1.6	AIS REPORT RATE .....	29
<b>2</b>	<b>INSTALLATION</b> .....	<b>30</b>
2.1	INSTALLATION PROCEDURES.....	30
2.2	MOUNTING THE M10 UNIT.....	31
2.3	INSTALLING THE AIS TRANSPONDER .....	32
2.4	VHF ANTENNA INSTALLATION .....	33
2.5	GPS ANTENNA INSTALLATION .....	34
2.6	CONNECTING POWER AND DATA CABLE .....	38
2.7	CONNECTING WITH NMEA0183 DEVICES .....	40
2.8	NMEA WIRING INSTRUCTIONS .....	41
2.8.1	NMEA0183 RS422 Connection .....	41
2.8.2	RS232 Connection .....	42
2.8.3	Twin RS232 Connection.....	43
2.9	AIS TX SILENT MODE .....	45
2.10	CONNECTING TO A POWER SUPPLY .....	45
2.11	CONNECTION TO NMEA2000 NETWORK .....	46
2.12	CONNECTING TO A CHARTING PROGRAM VIA USB.....	47

<b>3</b>	<b>CONFIGURING YOUR CLASS B TRANSPONDER .....</b>	<b>49</b>
<b>3.1</b>	<b>CONNECTING TO YOUR AIS TRANSPONDER.....</b>	<b>49</b>
<b>3.1.1</b>	<b>Required Items .....</b>	<b>49</b>
<b>3.1.2</b>	<b>Installing “AIS Configuration Tool” .....</b>	<b>50</b>
<b>3.1.3</b>	<b>Three steps to connect AIS transponder.....</b>	<b>51</b>
<b>3.1.4</b>	<b>Home page of the application .....</b>	<b>52</b>
<b>3.2</b>	<b>PROGRAMMING YOUR VESSEL DATA.....</b>	<b>53</b>
<b>4</b>	<b>GET STARTED .....</b>	<b>55</b>
<b>4.1</b>	<b>START UP THE TRANSPONDER.....</b>	<b>55</b>
<b>4.2</b>	<b>LED INDICATORS .....</b>	<b>56</b>
<b>4.3</b>	<b>SD CARD DATA LOGGING .....</b>	<b>57</b>
<b>4.4</b>	<b>WI-FI CONFIGURATION (M10W ONLY).....</b>	<b>59</b>
<b>4.4.1</b>	<b>Access Point Mode .....</b>	<b>60</b>
<b>4.4.2</b>	<b>Client Mode .....</b>	<b>63</b>
<b>4.5</b>	<b>BUILT-IN INTEGRITY TEST (BIIT).....</b>	<b>65</b>
<b>4.6</b>	<b>AIS VIEWER DESCRIPTION.....</b>	<b>66</b>
<b>5</b>	<b>SPECIFICATIONS.....</b>	<b>68</b>
<b>5.1</b>	<b>PRODUCT SPECIFICATIONS .....</b>	<b>68</b>
<b>5.2</b>	<b>DIMENSIONS .....</b>	<b>72</b>
<b>5.3</b>	<b>NMEA 2000 PGN INFORMATION.....</b>	<b>73</b>
<b>5.4</b>	<b>SUPPORTED NMEA0183 SENTENCES.....</b>	<b>75</b>
<b>6</b>	<b>TROUBLESHOOTING .....</b>	<b>76</b>

<b>7</b>	<b>ABBREVIATIONS .....</b>	<b>80</b>
<b>8</b>	<b>HOW TO DETERMINE SERIAL PORT .....</b>	<b>81</b>
<b>9</b>	<b>SCHEDULE OF PRODUCT WARRANTY (MCMURDO LTD) .....</b>	<b>83</b>



# 1 System Overview

## 1.1 Product Description

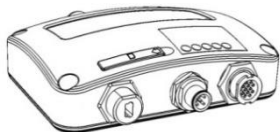
The McMurdo Smartfind M10 AIS Class B Transponder is perfect for smaller vessels, where the complexity of a Class A Transponder is not necessary. It transmits the vessels dynamic and static data in a typical 7 NM range as well as receives AIS targets typically within 20 NM around the boat. Using the built-in GPS receiver, the Smartfind M10 determines position, speed and course, and once this is combined with other navigational information, it is automatically transmitted without any user interaction. When received by other vessels and coast stations, the data built up will provide a live graphical display of traffic in the area. The McMurdo M10 has been engineered for flawless integration with navigation systems, and supports NMEA2000 and NMEA0183 communications, and its output meets IEC 62287 and related standards. The M10 also features USB connectivity and an optional WI-FI interface (M10W). The SD card slot in the Smartfind M10, can be quickly and easily used as a data recorder, enabling the capture of all messages - to assist in system and safety monitoring, including incident investigation. The recorded data is logged and stored on the SD card when fitted. A 'Silent' mode allows the user to stop the broadcast of static and dynamic information on occasions where either privacy or security is required.

Smartfind M10 series supports "Dual GPS Backup" to enable GPS input from both NMEA 2000 and NMEA 0183. This feature actively backs up your external GPS antenna to ensure the positioning and transmission of your AIS transponder.

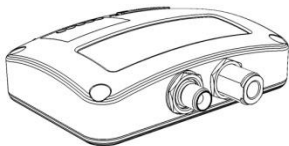
## **Key Features:**

- **High performance AIS Class B transponder**
- **Dual-channel AIS receiver with DSC**
- **NMEA2000 and NMEA0183 connectivity**
- **Mini USB-B socket**
- **SD data logger card slot**
- **Built in high-sensitivity GPS receiver with GPS antenna included**
- **Optional silent mode (suspends AIS transmissions)**
- **Compact and stylish design**
- **Low power consumption, 12 to 24V DC power supply**
- **Supplied with AIS Viewer and Configuration software for use on a PC**

M10

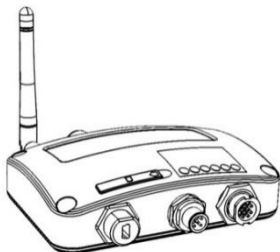


Front

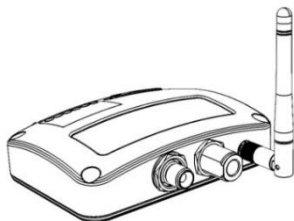


Back

M10W



Front



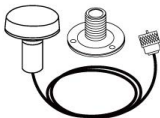
Back

## 1.2 Equipment in the Box

Upon receiving the product please verify all the items are in the box. If any items are missing, please contact your local Netwave Systems representative immediately.



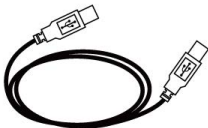
Class B AIS Transponder



GPS antenna GA-22 with  
10m cable



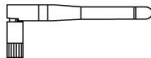
M3.5x25 Screws



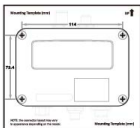
Mini USB to USB cable



12pin cable with power, dual  
NMEA0183 and silent switch



Wi-Fi antenna  
(M10W only)



Mounting Template



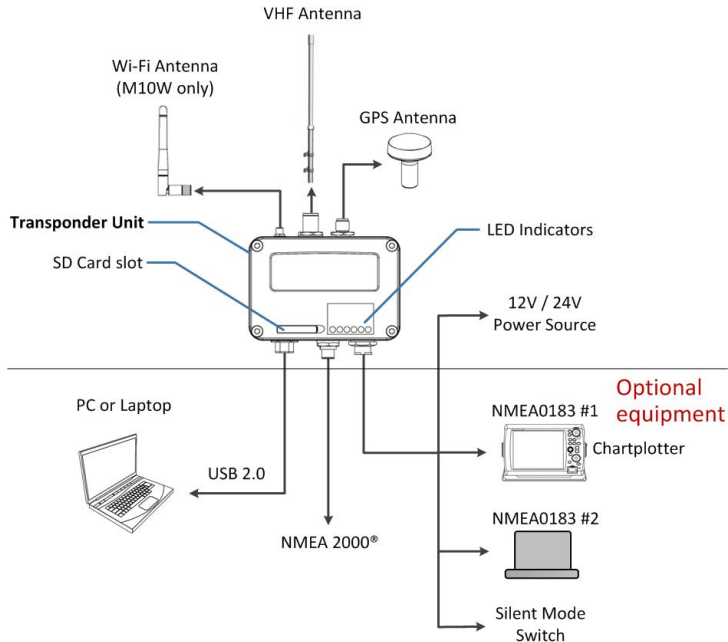
Software CD: configuration utility,  
USB driver, AIS Viewer, user manual



User Manual



## 1.3 External Connections



## 1.4 What is AIS?

The Automatic Identification System (AIS) is a Very High Frequency (VHF) radio broadcasting system that transfers packets of data over the VHF data link (VDL) and enables AIS equipped vessels and shore-based stations to exchange identification information and navigational data. Ships with AIS transponders continually transmit their ID, position, course, speed and other data to all nearby ships and shore stations. Such information can aid greatly in situational awareness and provide a means to assist in collision avoidance.

AIS equipment is standardized by ITU, IEC, IALA and IMO and is subject to approval by a certification body. The following AIS devices have been developed for various applications.

- **AIS Class A:**

mandated by the IMO for vessels of 300 gross tonnages and upwards, engaged on international voyages, cargo ships of 500 gross tonnages and upwards, as well as passenger ships. It typically transmits using 12.5W output power.

- **AIS Class B:**

provides limited functionality and is intended for non-SOLAS commercial vessels and recreational vessels. It typically transmits using 2W output power.

- **AIS Receiver:**

only receives AIS signals as it does not have a transmitter to send out AIS signals. This type of device is for recreational vessels that do not want to send out its vessel information.

- **AIS Base Station:**

is provided by aids-to-navigation authorities to enable the ship to shore / shore to ship transmission of information. Networked AIS Base Stations can assist in providing overall maritime domain awareness.

- **AIS AtoN (Aids to Navigation):**

provides an opportunity to transmit position and status of buoys and lights through the same VDL, which can then show up on AIS-ready devices within range.

- **AIS SART:**

Search and Rescue Transmitter using AIS can be used to assist in determining the location of a vessel in distress. It is typically used on life rafts.

- **AIS MOB**

Man Overboard transmitter or personal AIS beacon, used to assist in survivor recovery.

- **AIS on Search and Rescue (SAR) Aircraft:**  
used on airplanes and helicopters to assist search and rescue operation.

## 1.5 AIS Class B Message Types

Class B AIS broadcasts following message types:

### **Static Data:**

- MMSI
- Vessel name
- Vessel call sign
- Type of ship
- Ship dimensions / GPS antenna location

### **Dynamic Data:**

- Position of the vessel
- Course over ground (COG)
- Speed over ground (SOG)
- True heading

## 1.6 AIS Report Rate

Class B AIS devices broadcast the ships dynamic data as per the following reporting interval table.

<b>Ship Condition</b>	<b>Nominal Reporting Interval</b>
Ship not moving faster than 2 knots	3 Minutes
Ship moving faster than 2 knots	30 Seconds

Additionally the ships static data will be broadcasted every 6 minutes.

## **2 Installation**

### **2.1 Installation Procedures**

Please familiarize yourself with the manual content before beginning the installation. Depending on your hardware configuration, use the following recommended steps for installation.

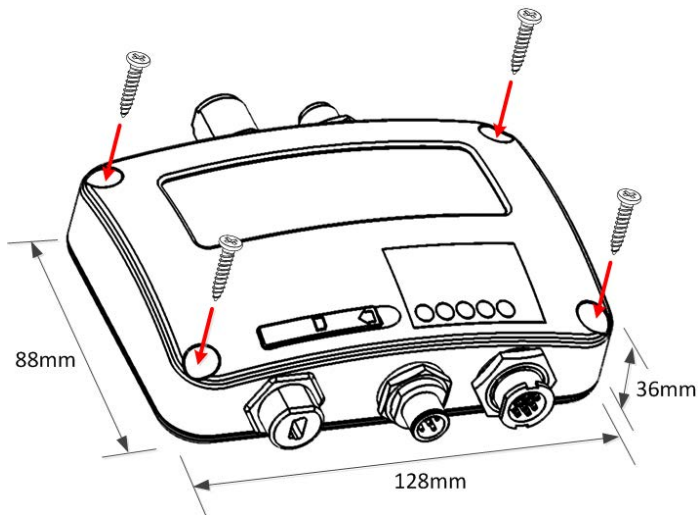
- 1) Mount the transponder unit in an appropriate location  
(see section 2.2)
- 2) Install VHF antenna
- 3) Install GPS antenna
- 4) Connect the antenna cables to the transponder unit
- 5) Connect to a chart plotter and/or other instruments via NMEA 0183, NMEA 2000 or USB
- 6) Make silent mode connection if applicable (external switch needed, not included)
- 7) Connect to an appropriate power source (12V / 24V DC, 2A)
- 8) Power On the power source (which turns on the transponder unit)
- 9) Program MMSI and vessel information into the device using the configuration software before installation
- 10) Perform LED checking and system functional test

## 2.2 Mounting the M10 Unit

The following guidelines should be noted when selecting the environment to install your McMurdo Smartfind M10:

- Do not install the M10 AIS transponder in a flammable or hazardous atmosphere such as in an engine or generator room or close to fuel tanks.
- Installation of the transponder should be undertaken in a safe environment without being exposed to any splashing from water or rain.
- There should be adequate space around the AIS transponder for routing of cables. See figure below for details of the AIS transponder dimensions.
- The safe distance of the transponder to any magnetic compass is at least 0.55m.
- The operating temperature for the unit is between  $-15^{\circ}\text{C}$  and  $+55^{\circ}\text{C}$ .
- The AIS transponder should be installed and mounted on a flat surface, or it can be mounted on a wall with the four self tapping screws supplied.
- The device should be mounted in a location where the indicators can readily be observed as these indicators deliver relevant information on the status of the AIS transponder.

## 2.3 Installing the AIS Transponder

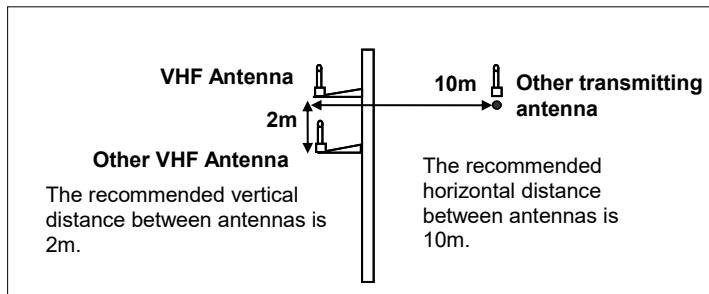


**Figure 1** Mounting the transponder



## 2.4 VHF Antenna Installation

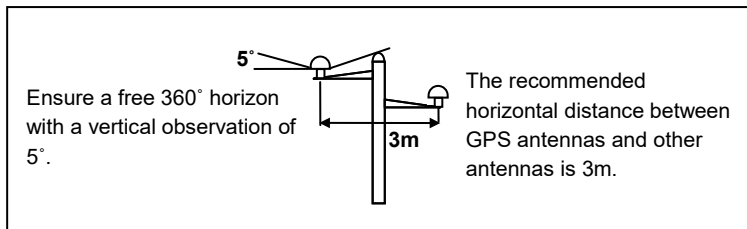
The quality and positioning of the antenna are the most important factors dictating AIS performance. It is recommended that a VHF antenna with omnidirectional vertical polarization be specifically tuned for marine band. Since the range of VHF signals is largely decided by line of sight distance, the VHF antenna should be placed as high as possible and at least 5 meters away from any constructions made of conductive materials.



**Figure 2 VHF antenna location**

## 2.5 GPS Antenna Installation

Install the GPS antenna where it has a clear view to the sky, so that it may access the horizon freely with 360° degrees with a vertical observation of 5 to 90 degrees above the horizon.



**Figure 3 GPS Antenna Location**

It is recommended to keep the GPS antenna out of the transmitting beam of high-power transmitters such as Inmarsat devices and radar.

When connecting the cables, take note of the following precautions.

- Sharp bending of the cable may cause damage to the inner wires and impair the overall performance.
- The coaxial cable should be run separately to other cables.
- Insulation tape on the GPS connector on the coaxial cable is recommended.

Smartfind M10 series is tested with the GPS antenna GA-22. It's recommended to use GA-22 to ensure optimal reliability of your AIS system.

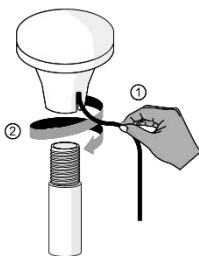
### **Pole Mounting:**

For pole mounting the GA-22, a 1 inch 14 TPI thread pole will be required.

1. Align the GPS cable with the opening slot found on the side of the GPS Antenna.

Note: Lightly pull the GPS cable outward to ensure that the cable is not lodged between the GPS Antenna and the pole while is being secured.

2. Align the GPS Antenna to the pole and turn clockwise until is securely tightened.



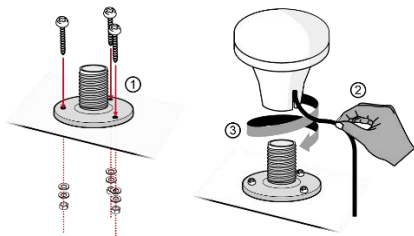
**Figure 4      GPS Antenna Pole Mounting**

## Base Mounting:

1. Mount the base with the provided screws.
2. Align the GPS cable with the opening slot found on the side of the GPS Antenna.

Note: Lightly pull the GPS cable outward to ensure that the cable is not lodged between the GPS Antenna and the pole while is being secured.

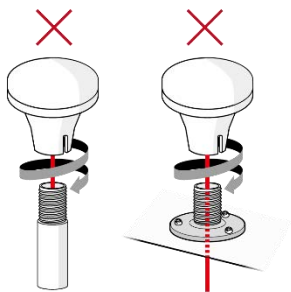
3. Align the GPS Antenna to the pole and turn clockwise until is securely tightened.



**Figure 5 GPS Antenna Base Mounting**



**WARNING:** Applicable to Pole and Base mount installations. The GPS Cable should not be routed through the middle opening of the pole or the base mount.

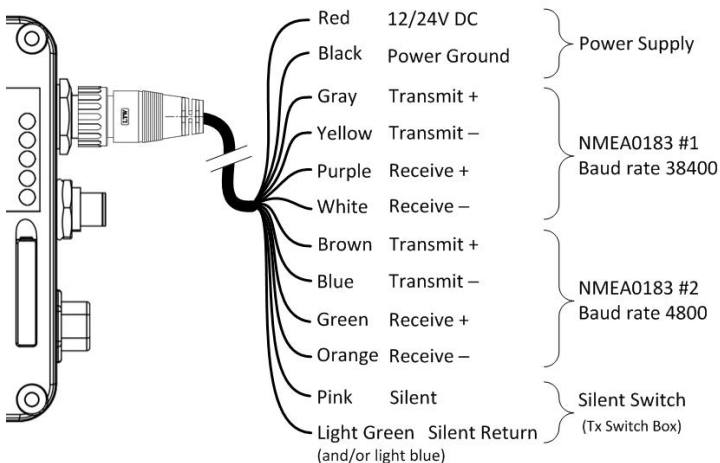


**Figure 6**      **Improper Installation**

## 2.6 Connecting Power and Data Cable

The connections for the cable used on the Smartfind M10 are illustrated in the diagram below, these are for the connections to an external power source and data equipment

### Wiring Definition



**Figure 7** Wiring instructions

When wiring the M10 to a NMEA0183 AIS-ready equipment, please refer to your equipment manual first. The default NMEA 0183 baud rates of Smartfind M10 are 38400-bps (high speed) and 4800-bps (low speed). Use the provided M10 configuration utility to change baud rates.



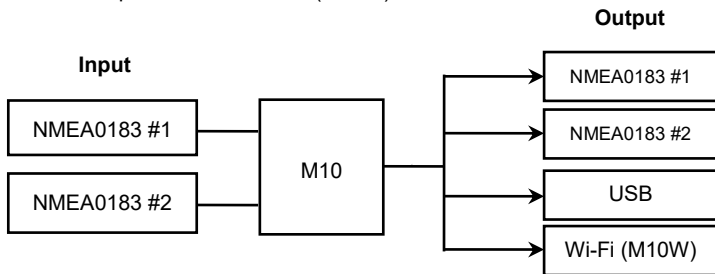
**Smartfind M10W supports only one configurable baud rate configuration for Tx/Rx on NMEA 0183 port #2.**



**During installation, you may have to strip back some of the wires insulation to make the appropriate connections. After completing the installation, please cover all exposed wires with suitable insulation to prevent the devices from malfunctioning or being short-circuited.**

## 2.7 Connecting with NMEA0183 Devices

The Smartfind M10 supports two NMEA0183 ports and each of the NMEA0183 port's transmitting and receiving interfaces can be configured to 4800, 9600, or 38400 baud rate independently. The default baud rates are 38400-bps (high speed) and 4800-bps (low speed). The provided M10 configuration utility enables the user to change the baud rates. Typically the high speed setting is intended primarily for a chart plotter connection, while the lower speed setting can be used to connect it to other NMEA0183 devices. The ports have bidirectional multiplexing, which means any received messages via one port are automatically transmitted to the other NMEA 0183 port, USB and Wi-Fi (M10W).



**Figure 8 Multiplexing with NMEA0183 ports**



## 2.8 NMEA Wiring Instructions

### 2.8.1 NMEA0183 RS422 Connection

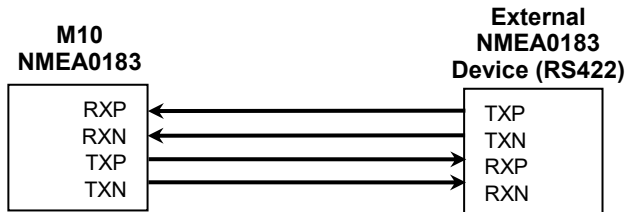


Figure 9 NMEA0183 Connection illustration

NMEA 0183 Signal	Signal Direction (M10)	External NMEA0183 Device
Receive + (RXP)	Input	Data Output + (TXP)
Receive - (RXN)	Input	Data Output - (TXN)
Transmit + (TXP)	Output	Data Input + (RXP)
Transmit - (TXN)	Output	Data Input - (RXN)

## 2.8.2 RS232 Connection

In order to ensure an errorless operation, both NMEA0183 ports should be only connected with NMEA0183 devices. In case RS232 devices are required to be connected and no dedicated RS-422 to RS232 converter is available, the connection should be configured as shown in the figures below. Please note that the wiring is made at user's own risk, as such connection might cause damage to the transponder.

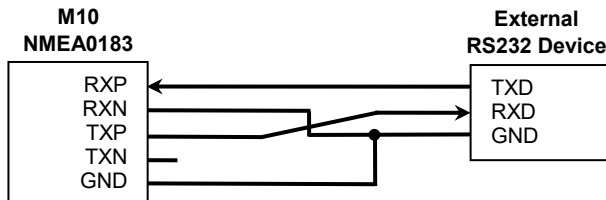


Figure 10 NMEA0183 to RS232 Connection

NMEA 0183 Signal	Signal Direction (M10)	External RS-232 Device
Receive + (RXP)	Input	Data Output (TXD)
Receive - (RXN)	-	Ground
Transmit + (TXP)	Output	Data Input (RXD)
Power Ground, (GND)	-	Ground

## 2.8.3 Twin RS232 Connection

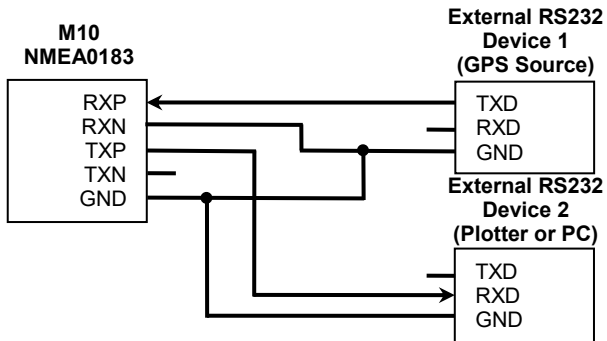


Figure 11 NMEA0183 to RS232 Connection (Multiplexing)

NMEA 0183 Signal	Signal Direction (M10)	External RS-232 Devices
Receive + (RXP)	Input	Data Output @ Device 1 (TXD)
Receive - (RXN)	-	Ground @ Device 1 (GND)

Power Ground(GND)	-	Ground @ Device 1 (GND)
Transmit + (TXP)	Output	Data Input @ Device 2 (RXD)
Receive – (RXN)	-	Ground @ Device 2 (GND)
Power Ground(GND)	-	Ground @ Device 2 (GND)

## **2.9 AIS TX Silent Mode**

If you require to use the TX Silent Mode feature, you will need to connect an external toggle switch (not supplied) to the Smartfind M10. To use this featured connect the toggle switch between the pink and light blue wires (Silent Switch connections) to enable the Silent Mode function. When the two wires are shorted together by the switch, the unit will be in Silent Mode and will not transmit and the Tx/Silent LED will be red.

## **2.10 Connecting to a Power Supply**

The Smartfind M10 requires a 12V or 24V DC power supply (9.6 – 31.2V operation range) capable of supplying 2A peak current. The red wire and black wire in the 12 pin cable supplied are used to connect the power supply's positive and negative terminals. A 5 Amp fuse or circuit breaker must be used in the connection between the power supply and the unit.

## 2.11 Connection to NMEA2000 Network

NMEA2000 is the latest marine standard for data communication between marine instruments. With a NMEA 2000 network onboard, a faster data throughput, better transmission reliability and easy data sharing can be realized.

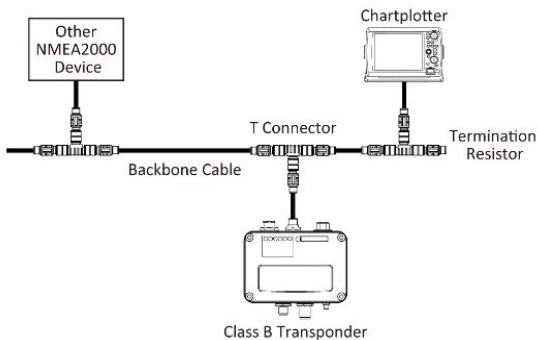
The Smartfind M10 is equipped with a NMEA2000 interface with a connection value of LEN=1. AIS targets received by the transponder will be displayed on your chart plotter when both are connected to a NMEA2000 network with a compatible T-connector and drop cable, available from your local service partner.

Smartfind M10 series works with GPS input from both NMEA 2000 and NMEA 0183 to back up your external GPS antenna. The GPS input priority is external GPS antenna → NMEA 0183 → NMEA 2000.

When there are multiple GPS sources available on the NMEA 2000 bus, the Smartfind M10 series will pick the source following the criteria below:

- The source has the lowest device source address
- The source has a valid GPS position fix

Please refer to 5.3 and 5.4 for more info about the related NMEA 2000 and NMEA 0183 sentences for GNSS reception support.



**Figure 8 NMEA2000 Network**

## 2.12 Connecting to a charting program via USB

Your transponder can be used as a source of AIS for electronic charting and navigation program (PC/Mac) such as NaviPro, TimeZero, Coastal Explorer or OpenCPN etc. Follow the steps below to connect the transponder to the software:

- Connect the transponder to your PC or Mac using the USB cable that comes with the package. In most cases, the USB driver will be installed automatically. When it's not the case, you can find the driver on the McMurdo website (<https://www.seasofsolutions.com>).

- Make sure the baud rate is set at *115200*. The data port can be confirmed by running the Device Manager on your computer or be detected automatically depending on the software.



## 3 Configuring Your Class B Transponder

Smartfind M10 and M10W transponder are delivered with a powerful “McMurdo AIS Class B Configuration” allowing users to set up the transponder and make a real-time diagnosis. A more detailed user guide can be found in the “Help” of the software.

### 3.1 Connecting to your AIS Transponder

#### 3.1.1 Required Items

Before preceding the configuration procedure, make sure the following items are available:

- USB Driver (included in the software CD)
- USB cable (included in the box)
- Mac OS X 10.6 and later or Microsoft® Windows® XP, Windows® Vista®, Windows 7, Windows 8, Windows 10 (including both 32 and 64-bit versions)
- One available USB port on PC
- Available CD-ROM drive on PC



**Note:** For configuration and firmware upgrade purpose, M10 series can be powered only by USB. When USB power is in use, the device will not transmit any data. To configure the Wi-Fi of M10W, a regular 12/24V DC power supply is required.

### 3.1.2 Installing “AIS Configuration Tool”

The “McMurdo AIS Class B Configuration” must be installed before connecting your transponder to your PC or Mac.

The application can be found on the CD supplied with your AIS Class B transponder. Insert the CD into your PC or Mac and navigate to the ‘Windows’ or ‘Finder’ folder.

**Windows:** Double-click the ‘setup.exe’ to start the installer and follow the on-screen instructions.

**Mac:** Double-click the ‘AISConfigurationTool.dmg’ file. A new Finder window will open and drag the “AIS Configuration Tool” to the Applications folder to complete the installation process.

You can now launch the application from the Windows® Start menu or the Mac Applications folder.

### **3.1.3 Three steps to connect AIS transponder**

#### **Step 1:**

Connect your Class B AIS transponder to your PC or Mac using a USB cable. In most cases the USB driver will be installed automatically by Windows system. When USB driver installation is not done automatically, it can be found on the attached CD and installed manually. Follow the on-screen instructions and assign the correct file path of the USB driver to complete the installation.

#### **Step 2:**

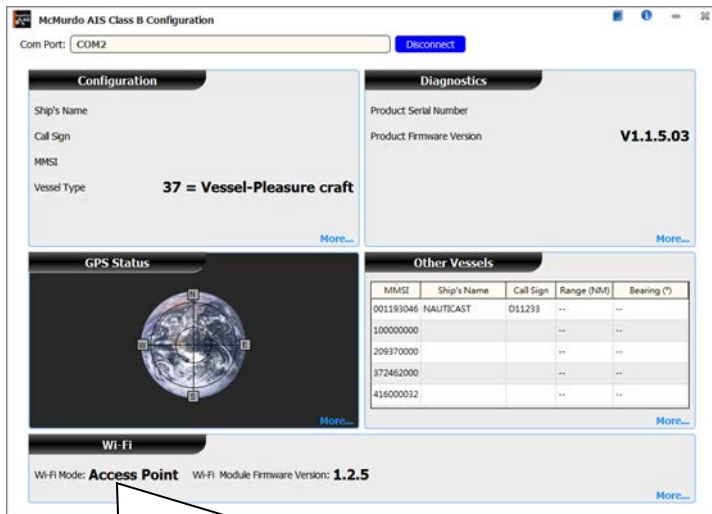
Select the “Com Port” corresponding to your AIS transponder from the drop-down menu at the top left of the window, normally listed as “AIS Virtual Com”.

#### **Step 3:**

Click the ‘Connect’ button. In a short moment, the button will be displayed as “Disconnect” when the connection is established.

### 3.1.4 Home page of the application

The application is now communicating with your AIS transponder and will display any pre-configured vessel data on the 'Home' page depicted as follows.



McMurdo AIS Class B Configuration

Com Port: COM2 [Disconnect](#)


#### Configuration

Ship's Name  
Call Sign  
MMSI  
Vessel Type **37 = Vessel-Pleasure craft** [More...](#)

#### Diagnostics

Product Serial Number  
Product Firmware Version **V1.1.5.03** [More...](#)

#### GPS Status

 [More...](#)

#### Other Vessels

MMSI	Ship's Name	Call Sign	Range (NM)	Bearing (°)
001193046	NAUTICAST	D11233	--	--
100000000			--	--
209370000			--	--
372462000			--	--
416000032			--	--

[More...](#)

#### Wi-Fi

Wi-Fi Mode: **Access Point** Wi-Fi Module Firmware Version: **1.2.5** [More...](#)

Wi-Fi setting is only available when Wi-Fi module on the AIS device is detected.

## 3.2 Programming your vessel data

After the transponder is successfully connected with the McMurdo AIS Class B Configuration, click on the “Configuration” tab. You will require the following information in order to configure your AIS transponder:

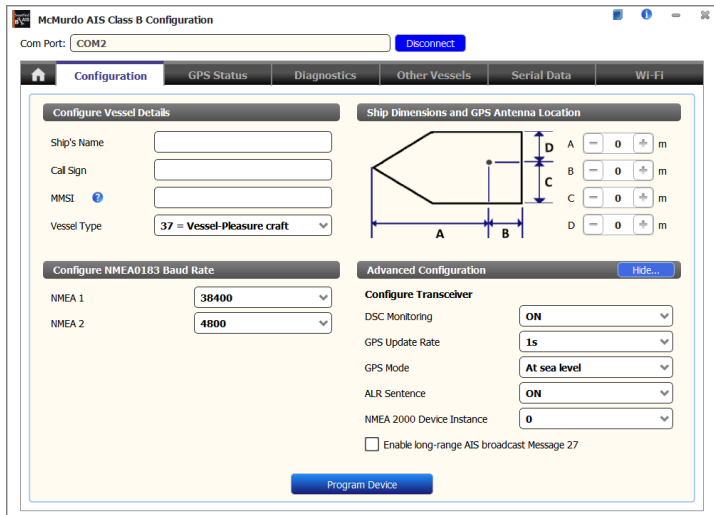
- Vessel name: limited to 20 characters
- Call sign: limited to 7 characters
- MMSI: Enter your MMSI (Maritime Mobile Service Identity) number
- Vessel type: choose your ship type from the drop down list
- Ship dimensions: Enter the vessel dimensions and position of your GPS antenna installation
- Configure NMEA 0183 Baud Rate: Baud rate of NMEA 0183 # 1 and NMEA 0183 # 2 can be configured here to 38400, 9600 or 4800.



**WARNING:** The MMSI number can only be entered once. Be sure to enter the correct MMSI number, as it cannot be corrected if entered incorrectly.



**Smartfind M10W supports only one baud rate configuration for both Tx & Rx on NMEA0183 port #2.**



**Figure 12 Static Data Setting**

## 4 GET STARTED

### 4.1 Start up the Transponder

The transponder will start up whenever the connected power source is ON. It will operate automatically if the transponder has been properly configured using the Configuration Software (MMSI entered) and GPS/VHF antennas are also properly installed and connected to the unit. Normally the transponder should transmit its own ships position every 30 seconds or 3 minutes depending on the vessel speed. It should also receive other vessels' information that are in the vicinity.

The operational status of the transponder can be visually checked from the LED lights on the unit. Description of the LED indicators are provided in the following section.

## 4.2 LED Indicators

Indicator	Light	Description
<b>Power</b>	Green, steady	The transponder is powered up correctly. By USB power the Power LED does not light showing that the transponder is in USB power mode.
<b>Error</b>	Red, steady Red, flashing	MMSI is not properly set. The system has a BIIT error. Please refer to 4.5 for more information about BIIT.
<b>Rx</b>	Green, flashing	When receiving AIS data.
<b>Tx/Silent</b>	Green, flashing Orange, flashing Orange, steady Periodical off by steady Orange	When transmitting AIS data. Acquiring a GPS fix. Silent mode on. Acquiring GPS fix by silent mode.
<b>SD</b>	Green, flashing/steady	<ul style="list-style-type: none"><li>• Flashing: SD card is being accessed.</li><li>• Steady: SD card is full. Replace with another empty SD card or delete files to obtain free spaces.</li></ul>
<b>Wi-Fi (M10W only)</b>	Green, flashing	The green LED indicates an active Wi-Fi traffic



## 4.3 SD Card Data Logging

The Smartfind M10 records voyage data onto a SD card in log files in a .txt format. The compatible SD card types supported by the M10 are:

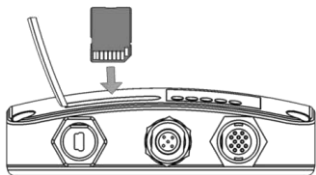
- Standard “SD” with maximum 2GB size
- Supported data format: FAT12/16
- Standard “SDHC” with maximum 32GB size
- Supported data format: FAT32

The log files have naming convention of AIS\_XXXXXX.txt with increment from 000001 to 999999. Entry in the log file is vessel’s GPS sentence in IEC 61162 format.

The SD card is hot-swappable. Insert the SD card into the slot until the card is seated. When the transponder is powered on, it will commence logging voyage data and indicate the writing process by flashing the green SD LED indicator.

The device overwrites the oldest data when the storage space is full. Removing SD card from the transponder stops data logging immediately, and the SD LED will turn off.

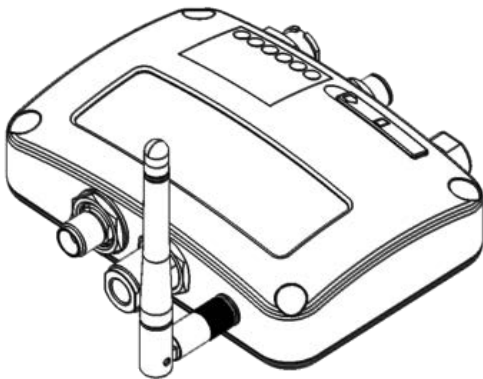
It’s recommended to format your SD card regularly, e.g. every 1~3 month for optimal data integrity. Please save any data you wish to keep prior to formatting your memory card.



**Figure 13** Inserting SD memory card

## 4.4 Wi-Fi Configuration (M10W only)

Installation of Wi-Fi antenna is straight forward. Screw on the antenna firmly to the WI-FI connection and then adjust the antenna to be in a vertical position.



**Figure 14 Transponder with Wi-Fi antenna connected**

M10W can work in Access Point Mode or Client Mode. The information below details the information required for connecting the M10W to another device using Wi-Fi.

## 4.4.1 Access Point Mode

M10W is featured with powerful Wi-Fi performance supporting wireless connection with up to 10 mobile devices. After the configuration is done, press “Configure Device” to save the settings to the class B transponder.

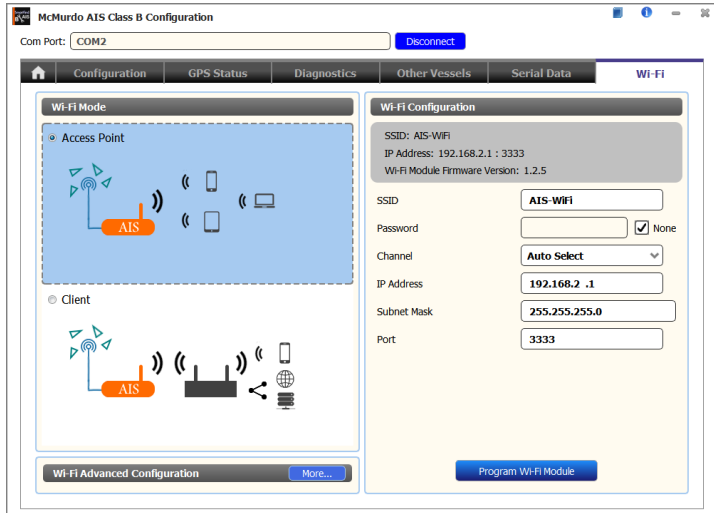
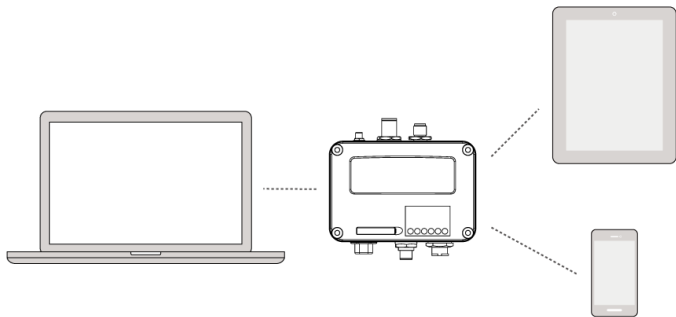


Figure 15 Access Point Mode



**Figure 16 Connect to mobile devices**

- **SSID (Service Set Identifier):**  
The SSID for the M10W is AIS-B-NNNN where NNNN is the last 4 digits of the units serial number (printed on the label on the side of the unit). When user wants to create their own SSID, just input the preferred SSID in the SSID field and then press “Configure Device”.
- **Password:**  
By default the Wi-Fi network has no password. Users are allowed to create their own key with an alpha-numeric password between 8 and 63 characters long. The password can include symbols (!?\*&\_) and spaces.

- **System IP:**  
Default system IP is **192.168.2.1**  
User can create IP by inputting value in individual field.
- **Port:**  
Default port is **3333**. User can set the port between 3000-65535.



**Note: By default M10W uses WPA2-Personal wireless security protocol.**

## 4.4.2 Client Mode

M10W is also able to join an existing Wi-Fi network. When clicking on „Client“, it can take up to 30 seconds until M10W scans all available Wi-Fi networks.

Pick the network you want to join and enter the password and click on “Connect”.

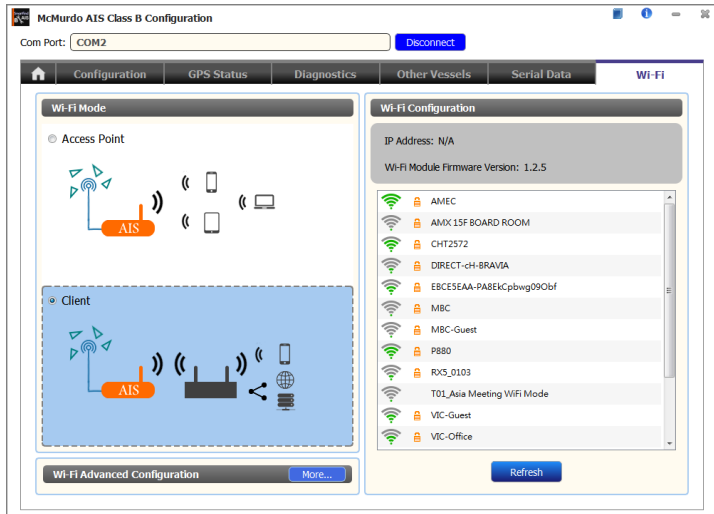
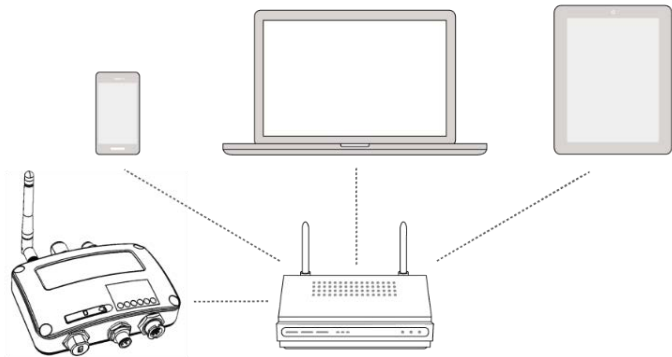


Figure 17 Client Mode



**Figure 18** Join an existing Wi-Fi network



## 4.5 Built-in Integrity Test (BIIT)

With a Built in Integrity Test (BIIT) function, the Smartfind M10 is constantly monitoring and testing the integrity of the AIS transponder. Should an abnormal condition be detected within the device, the Error LED will alert with a flashing red light. The following conditions will cause the Error LED to flash red

- Antenna VSWR exceeding the maximum allowed level
- MMSI not set
- Background noise level exceeds allowable threshold (-77dBm)
- GPS is unable to gain lock (3D fixed) after 30 minutes of losing GPS signal
- Low input power (< 8.6 V DC) (Error LED flash)

## 4.6 AIS Viewer Description

The McMurdo AIS Viewer is a complementary software package which displays AIS targets on a PC screen, including outline mapping, and is supplied with your Smartfind M10 transponder. The software installation file for the McMurdo AIS Viewer can be found on the CD-ROM included with the M10 unit.

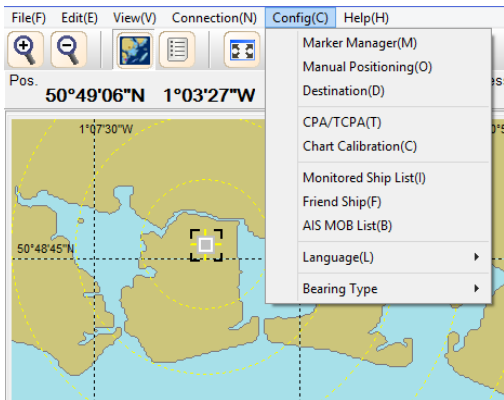
The McMurdo viewer allows users to display AIS targets either on a basic line map or in an alphanumeric view. It also allows your PC to be used as an AIS data logger (if the PC is running the viewer program and the data logging is enabled), which can be used to track other vessels with voyage track option and enables you to enter MMSI numbers for AIS Beacons to the MOB list.

Once the program is installed, you can establish a connection between the M10 and the PC either automatically or manually by assigning the COM port and baud rate. Please note that before trying to connect to a PC, you should quit the Configuration Software or vice-versa. The transponder can only establish one connection to the AIS software at a time.

M10W users can connect to the viewer via WI-FI, as detailed in section 4.4 in this manual or section 5.2.4.2 of the viewer manual.

The AIS viewer also allows the AIS CPA/TCPA setting to be configured via the AIS Viewer.

For further information regarding the McMurdo AIS viewer refer to the User manual accessed via the McMurdo AIS Viewer Help function.



**Figure 19 McMurdo AIS Viewer**

## 5 SPECIFICATIONS

### 5.1 Product Specifications

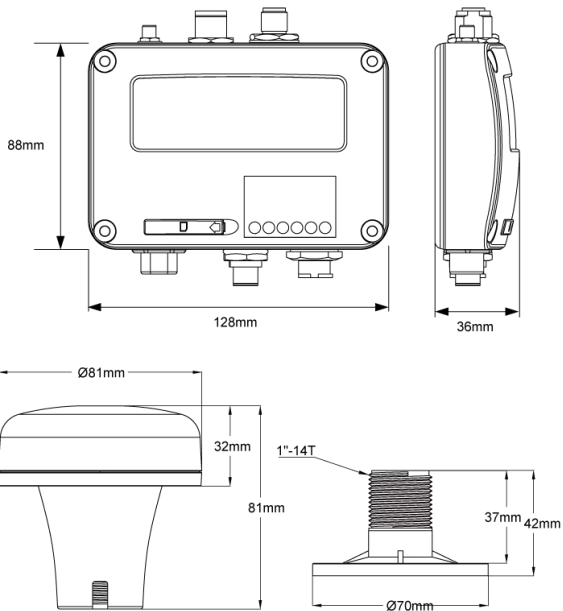
APPLICABLE STANDARDS	
EN 301 489-1 V2.1.0 / EN 301 489-3 V2.1.0	IEC 60945 Ed. 4:2002
EN 301 489-1 V2.1.0 / EN 301 489-17 V3.1.0	IEC 62287-1 Ed. 3:2017
EN 301 843-1 V2.1.1 / EN 301 843-2 V2.1.1	IEC 61108-1 Ed. 2:2003
EN 300 440 V2.1.1	EN 300 328 V2.1.0
EN 62368-1:2014 + A11:2017	EN 62311:2008 ITU-R M.1371-5 2014
VHF TRANSPONDER	
Frequency Range	156.025 MHz ~ 162.025 MHz
Channel Bandwidth	25 KHz
Modulation	GMSK / FM
Data Rate	9,600 bps
Number of AIS Transmitter	1
Number of AIS Receiver	2 (one time-shared between AIS and DSC)
Number of DSC Receiver	1 (time-shared between AIS and DSC)
AIS Channel 1	CH 87B (161.975 MHz)
AIS Channel 2	CH 88B (162.025 MHz)
Tx Power Output	2 Watt (33 dBm $\pm$ 1.5 dB)
Rx Sensitivity	< -107 dBm @ 20% PER

<b>DSC RECEIVER</b>	
Modulation	1,300 Hz / 2,100 Hz FSK
Data Rate	1,200 bps $\pm$ 30 ppm
Spurious Response Rejection	$\geq$ 70 dB for signal @ -104 dBm; BER $\leq$ 1 %
Blocking	$\geq$ 84 dB for signal @ -104 dBm; BER $\leq$ 1 %
<b>GNSS RECEIVER (integrated)</b>	
Receiving Channels	72 channels
Accuracy	IEC 61108-1 compliant
Output Rate	1 Hz
GNSS support: GPS & Galileo (factory default)	
<b>POWER SUPPLY</b>	
Supply Voltage	12V / 24V DC, 2A
Power Consumption M10	Typically less than 3W average @ 12V DC
Power Consumption M10W	Typically less than 4W average @ 12V DC
<b>CONNECTION INTERFACE</b>	
GPS Antenna Connector	TNC (Female)
VHF Antenna Connector	SO-239 (Female)
NMEA2000	Standard connector LEN=1

NMEA 0183 (RS-422)	Supports two NMEA0183 interfaces Baud rate configurable (default 38,400 bps) Separate Tx/Rx baud rate (NMEA 1 for M10W only) Standard IEC 61162-1 / IEC 61162-2 sentences
Silent Mode Setting	Set by connecting the dedicated wires in the 12-pin cable together.
USB	Mini-B type, waterproof
Wireless Connection	IEEE 802.11 b/g/n (Smartfind M10W only)
<b>ANT-21 GPS Antenna</b>	
Cable Length	10m
Mounting Bracket	Included
Supply Voltage	3.3V
<b>ENVIRONMENTAL</b>	
Operating Conditions	IEC 60945 "protected" category
Operating Temperature	-15°C ~ +55°C
Waterproof	IPX2
<b>FCC ID</b>	
M10	WZ7AIS-B108
M10W	WZ7AIS-B108W 2AFZ7-CJM210X (Wi-Fi module only)

<b>PHYSICAL</b>	
Width	128 mm (5.04 inches)
Height	36 mm (1.42 inches)
Depth	88 mm (3.46 inches) (excluding connectors)
Weight	250 g
<b>SOFTWARE TOOL</b>	
McMurdo AIS Class B Configuration	PC configuration utility
McMurdo AIS Viewer	AIS Viewer for PC
<b>Wi-Fi ANTENNA GAIN (M10W ONLY)</b>	
Tx Power Output	19.4 dBm EIRP
<b>GA-22 GPS ANTENNA</b>	
Cable	Integral 10m RG-174 cable plus mounting bracket
Supply Voltage	3.3V

## 5.2 Dimensions





### 5.3 NMEA 2000 PGN Information

The following table is a list of the NMEA 2000 messages supported by the Smartfind M10 unit.

The “Transmit” PGNs information includes “Own ship” + “Received AIS information from other ships” and is the reason the NMEA2000 PGN list covers both Class A and Class B related information.

Transmit	
PGN	Description
59392	ISO Acknowledgment
59904	ISO Request
60928	ISO Address Claim
126464	PGN List - Transmit PGN's group function
126996	Product Information
129025	Position Rapid Update
129026	COG SOG Rapid Update
129029	GNSS Position Data
129038	AIS Class A Position Report
129039	AIS Class B Position Report
129040	AIS Class B Extended Position Report
129041	AIS Aids to Navigation (AtoN) Report
129539	GNSS DOPs
129540	GNSS Sats in View
129792	AIS DGNSS Broadcast Binary Message
129793	AIS UTC and Date Report
129794	AIS Class A Static and Voyage Related Data

<b>129795</b>	AIS Addressed Binary Message
<b>129796</b>	AIS Acknowledge
<b>129797</b>	AIS Binary Broadcast Message
<b>129798</b>	AIS SAR Aircraft Position Report
<b>129800</b>	AIS UTC/Date Inquiry
<b>129801</b>	AIS Addressed Safety Related Message
<b>129802</b>	AIS Safety Related Broadcast Message
<b>129803</b>	AIS Interrogation
<b>129804</b>	AIS Assignment Mode Command
<b>129805</b>	AIS Data Link Management Message
<b>129806</b>	AIS Channel Management
<b>129807</b>	AIS Group Assignment
<b>129809</b>	AIS Class B "CS" Static Data Report, Part A
<b>129810</b>	AIS Class B "CS" Static Data Report, Part B
<b>Receive</b>	
<b>PGN</b>	<b>Description</b>
<b>59392</b>	ISO Acknowledgment
<b>59904</b>	ISO Request
<b>60928</b>	ISO Address Claim
<b>127250</b>	Vessel Heading
<b>127258</b>	Magnetic Variation
<b>129026</b>	COG & SOG, Rapid Update
<b>129029</b>	GNSS Position Data
<b>129539</b>	GNSS DOPs

## 5.4 Supported NMEA0183 Sentences

Transmit	
Sentence	Description
<b>GGA</b>	Global Positioning System Fix Data
<b>GSA</b>	GNSS DOP and Active Satellites
<b>GSV</b>	GNSS Satellites In View
<b>GLL</b>	Geographic Position – Latitude/Longitude
<b>RMC</b>	Recommended Minimum Specific GNSS Data
<b>VDO</b>	AIS VHF Data-Link Own-Vessel Report
<b>VDM</b>	AIS VHF Data-link Message
<b>ALR</b>	Alarm Status reports, setup option as section 3.3 (4)
Receive	
Sentence	Description
<b>DTM</b>	Datum Reference
<b>GBS</b>	GNSS Satellite Fault Detection
<b>GSA</b>	GNSS DOP and Active Satellites
<b>HDT</b>	Heading, True
<b>RMC</b>	Recommended Minimum Specific GNSS Data
<b>ROT</b>	Rate Of Turn

## 6 TROUBLESHOOTING

### **The transmitting LED (Green colour) is not illuminated**

The transmitting interval of a Class B transponder is 3 minutes if the speed of the vessel is less than 2 knots. If the speed exceeds 2 knots, the transmitting interval will be 30 seconds. For each transmission, the Tx/Silent LED will flash Green once quickly. The Tx indication could be missed if not observed carefully.

- For unit to transmit it requires the GPS information from the GPS antenna. Without the GPS information, the unit will not transmit an AIS signal. Please check if your GPS antenna is connected and setup correctly. See section 3.7 for further information.

### **Smartfind M10 receives AIS signals normally, but no one in the surrounding can see me, why?**

- AIS Class B transmission range limitation: an AIS Class B transponder transmitting range is 5-7 miles in perfect conditions. The AIS receiver in the transponder will typically see Class A vessels that are 20-30 miles away or more in good conditions. The reason for this is that all AIS Class B transmit at 2 watts whereas the Class A transmit at 12.5. This difference in transmission power impacts on the range of each transponder type. For this reason, it is quite possible that Class A vessels can be seen, but Class B vessels might not be seen.
- VHF antenna interference: if you are using a dedicated AIS/VHF antenna for your transponder, be sure that it is placed at least 6 ft (1.83

m) away from other VHF antennas or vertical metal objects and ideally install the antenna on a different vertical plane from other VHF antennas. In several tests, mounting two VHF antennas next to each other typically reduces the transmitting range to both antennas by 50-70%.

- GPS is not fixed: If your GPS antenna is not connected or setup correctly, your transponder will see other vessels fine, but you will not be sending out your vessel position. All AIS transponders need a good GPS fix before it can send out any type of transmission. The colour and state of the LEDs on the transponder indicate if the unit is in transmission mode or not.
- The location of the VHF antenna is directly related to AIS transmitting range. The VHF antenna should be installed as high as possible.

### **The silent mode (Tx off) on Smartfind M10 is not working.**

- Silent mode can be configured on Smartfind M10 by connecting the Silent Switch wires in the cable together.

### **Even though my Smartfind M10 is transmitting, why do some vessels with AIS take a long time to see my vessel name or not see it at all?**

- AIS Class B users should keep in mind that Class B transponders do not broadcast position updates as often as Class A commercial transponders. The full static information (such as vessel's name)

transmission is broadcasted every 6 minutes; however, the MMSI and dynamic information, (position update) will be sent out every 3 minutes if the vessel is moving slower than 2 knots or every 30 seconds in moving faster than 2 knots. In addition to this, if the receiving party is using a non-standard dual channel receiver or a single channel receiver, then in ideal conditions, the receiver will get your full static information every 12 minutes and your MMSI and dynamic information every 6 minutes if you are moving slower than 2 knots.

## **No data is being received by chart plotter**

- Please check that the power supply is connected correctly to the Smartfind M10.
- Please check that the power supply is 12V or 24V with sufficient current capacity (no less than 2A).
- Please make sure that the connections between the Smartfind M10 and the chart plotter are correct.

## **My chart plotter is showing COG or HDG alarms when the Smartfind M10 is running**

- Use configuration software, ALR sentence option to turn off ALR sentences.

## **My MMSI is being received by other vessels but my vessel name is not shown on their chart plotter or PC**

- Older chart plotter software and AIS displays may not be fully compatible with Class B transponders. In some cases, older equipment might only have Class B vessel show up on their displays with just an MMSI number without the vessel name. This is usually due to the displaying device not knowing how to process the Message 24 static data from Class B transponders. Please contact the chart plotter manufacturer and ask for software upgrades (for these older chart plotters) to resolve this issue.

## **The Red Error LED indication on the Smartfind M10 is illuminated.**

- The unit may not have a valid MMSI. Please check if the AIS transponder is correctly entered with a valid MMSI.
- Please make sure that both VHF and GPS antennas and their cables are working properly and not damaged.

If you still encounter difficulties with the set up or operation of the Smartfind M10, please email [customer.service@seasofsolutions.com](mailto:customer.service@seasofsolutions.com) with your details, the device information and the issue you are having.

## 7 ABBREVIATIONS

AIS	Automatic Identification System
ALR	Alarm message
COG	Course Over Ground
CPA	Distance to Closest Point of Approach
CSTDMA	Carrier-Sense Time Division Multiple Access
DSC	Digital Selective Calling
ECS	Electronic Chart System
ETA	Estimated Time of Arrival
GPS	Global Positioning System
HDG	Heading over Ground
IMO	International Maritime Organization
MMSI	Maritime Mobile Service Identity
SOG	Speed Over Ground
TCPA	Time to Closest Point of Approach
TDMA	Time Division Multiple Access
UTC	Coordinated Universal Time
VHF	Very High Frequency
VTS	Vessel Traffic Services



## 8 How to Determine Serial Port

If your PC/laptop does not have an available serial port, you may use an RS232-to-USB adapter. To find out the proper serial port for connection use the following instructions.

### **Windows 7 or VISTA version:**

Click on "Start" → Select "Control Panel" → Select "Device Manager" → Click Port (COM&LPT)

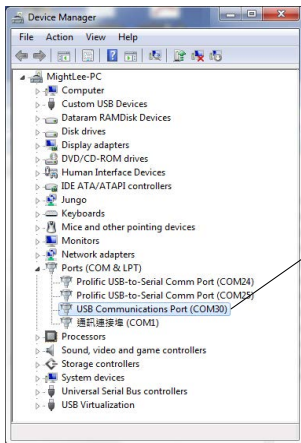
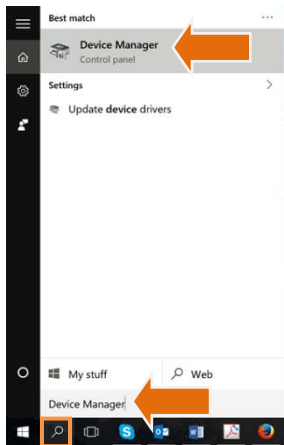
### **Windows 8 and 8.1:**

Click (W)\* + I and then click on Control Panel → Select "Device Manager" → Click Port (COM&LPT)

### **Windows 10**

⊞ + S → type Device Manager in the search box, and select Device Manager from the list of results. Expand the Ports (COM & LPT) and port number are presented with numerical number within a parenthesis in the following format (COMXX).

\* means Windows button



## **9 SCHEDULE OF PRODUCT WARRANTY (MCMURDO LTD)**

### **Warranty Registration**

Congratulations on purchasing your beacon. As standard, your unit has a one year (12 months) warranty from the date of purchase shown on your invoice, however, this can be extended by registering your unit on-line within 90 days of purchase at: <https://www.seasofsolutions.com> then follow the REGISTER WARRANTY link at the top of the page.

### **Warranty Statement**

Subject to the provisions set out below McMurdo Limited warrants that this product will be free of defects in materials and workmanship for a period of one year, for AIS products upon registration through the McMurdo Ltd warranty form, up to two years and for EPIRB and PLB upon registration through the McMurdo Ltd warranty form, up to five years (see above) from the date of purchase.

Exclusions, McMurdo will not be liable to the buyer under the above warranty:

- For any defect arising from fair wear and tear, wilful damage, negligence, abnormal working conditions, failure to follow McMurdo's instructions (whether oral or in writing) including a failure to install properly and/or to use batteries recommended and/or supplied by

McMurdo, misuse or alterations or repair of the product by persons other than McMurdo or an Approved Service Agent.

- For parts, materials or equipment not manufactured by McMurdo in respect of which the buyer shall only be entitled to the benefit of any warranty or guarantee given by the manufacturer to McMurdo. For the battery storage life which is specifically excluded from this warranty.
- If the total price for the product has not been paid.
- Warranty is not transferable.
- Batteries.

**THE LIMITED WARRANTY STATED ABOVE IS EXCLUSIVE AND IN LIEU OF ANY OTHER WARRANTY, EXPRESS OR IMPLIED, INCLUDING BUT NOT LIMITED TO ANY IMPLIED WARRANTY OF MERCHANTABILITY OR FITNESS FOR A PARTICULAR PURPOSE.**

McMurdo will not be liable for indirect, special, incidental or consequential damages of any kind sustained from any cause. In no event shall McMurdo be liable for any breach of warranty or other claim in an amount exceeding the purchase price of the product. This warranty does not affect any statutory rights of the consumer. In order to be valid, claims must be made under the above warranty in writing as soon as practicable after discovery of the defect or failure and within the warranty period referred to above. Proof of purchase will be required.

The claim should be sent together with the product in question to the address set out below or to an Approved Service Agent. Following a valid warranty claim McMurdo shall be entitled to repair or replace the product (or part) in question free of charge, or at McMurdo's sole discretion to refund to the buyer the price of the product (or a proportional part of the price). McMurdo shall not be liable to a buyer who is not a consumer for any other loss or damage (whether indirect, special or consequential loss of profit or otherwise) costs, expenses or other claims for compensation which arise out of or in connection with this product. In the case of a consumer, McMurdo shall only be liable where other loss or damage is foreseeable. Nothing shall limit McMurdo's liability for death or personal injury caused by its negligence. This warranty is to be interpreted under English law.

**All enquiries relating to this warranty or Approved Service Agents should be sent to McMurdo Ltd**

Phone: +44 (0)23 9262 3900

Email: [sales@seasofsolutions.com](mailto:sales@seasofsolutions.com)

Website: [www.seasofsolutions.com](http://www.seasofsolutions.com)



## **Netwave Systems B.V.**

Blauw-roodlaan 100,  
2718 SJ Zoetermeer,  
Netherlands

Phone: +31 (0) 8811 81500

Email: [customer.service@seasofsolutions.com](mailto:customer.service@seasofsolutions.com)

Website: [www.seasofsolutions.com/](http://www.seasofsolutions.com/)

21-235-001 Issue 19

A Seas Of Solutions Business