



# PIECES DETACHEES ET DIMENSIONS SPARE PARTS AND DIMENSIONS

LIVRET 16  
BOOKLET 16

## Enrouleurs de G nois / *Headsail Reefing-Furling Systems*

### Gamme Basic *Basic Systems*

**B29 S - B29 L**  
**B35 S- B35 M- B35 L**

Date	page	modif	indice

Ce document peut  tre soumis   toute modification sans notification pr alable. Ce document n'a pas de valeur contractuelle. Avant toute commande, merci de v rifier la disponibilit  du stock. Certaines r f rences sont maintenues uniquement jusqu'   puisement du stock.

This drawing is subject to any change without prior notification. No rights can be obtained from this document. Before ordering, please check if the part number is still available from stock. Some parts are only available until stock runs out.

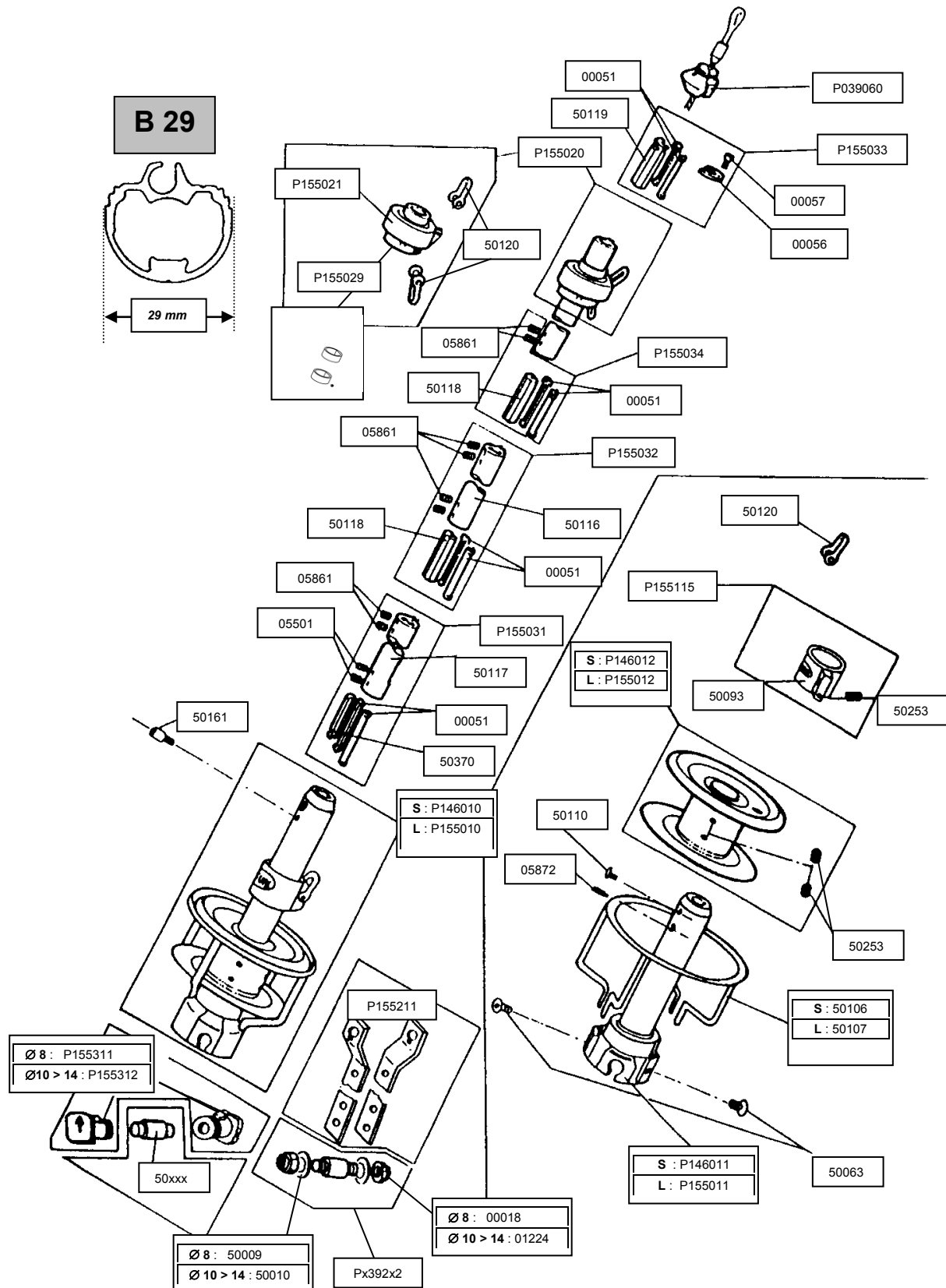
De prijzen in deze prijslijst kunnen zonder voorafgaand bericht gewijzigd worden. Geen rechten kunnen ontleent worden aan dit document. Controleer voor het plaatsen van de order of het artikelnummer nog leverbaar is. Enkele artikelen zijn enkel beschikbaar zo lang de voorraad sterkt.

Este documento puede estar sometido a toda modificaci n sin notificaci n previa. Este documento no tiene valor contractual. Antes todo pedido, por favor comprueba la disponibilidad de las existencias . Ciertas referencias son mantenidas  nicamente hasta agotamiento de las existencias.



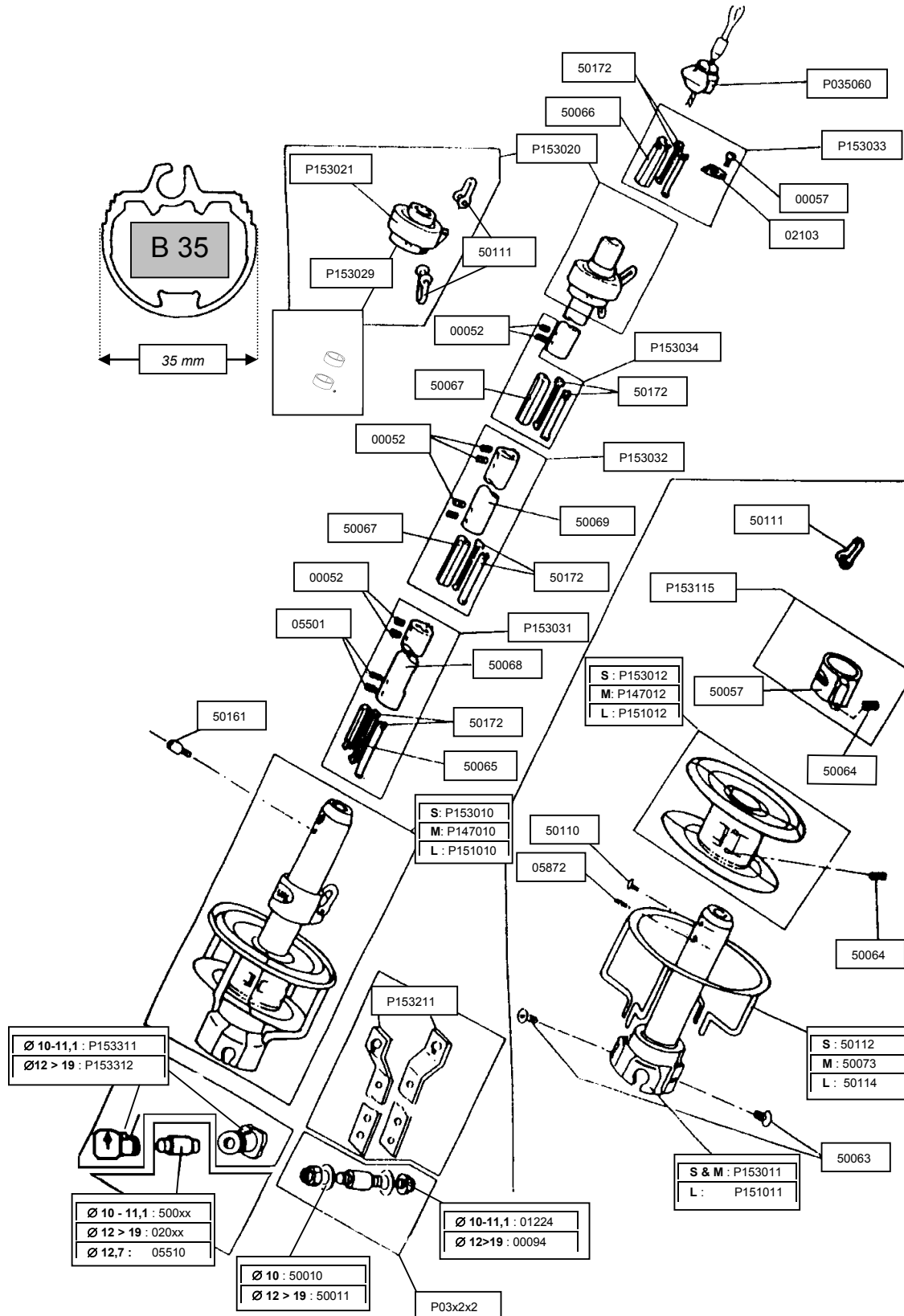
[www.profurl.com](http://www.profurl.com)

# PIECES DETACHEES POUR B29 S - L - M SPARE PARTS FOR B29 S - L - M



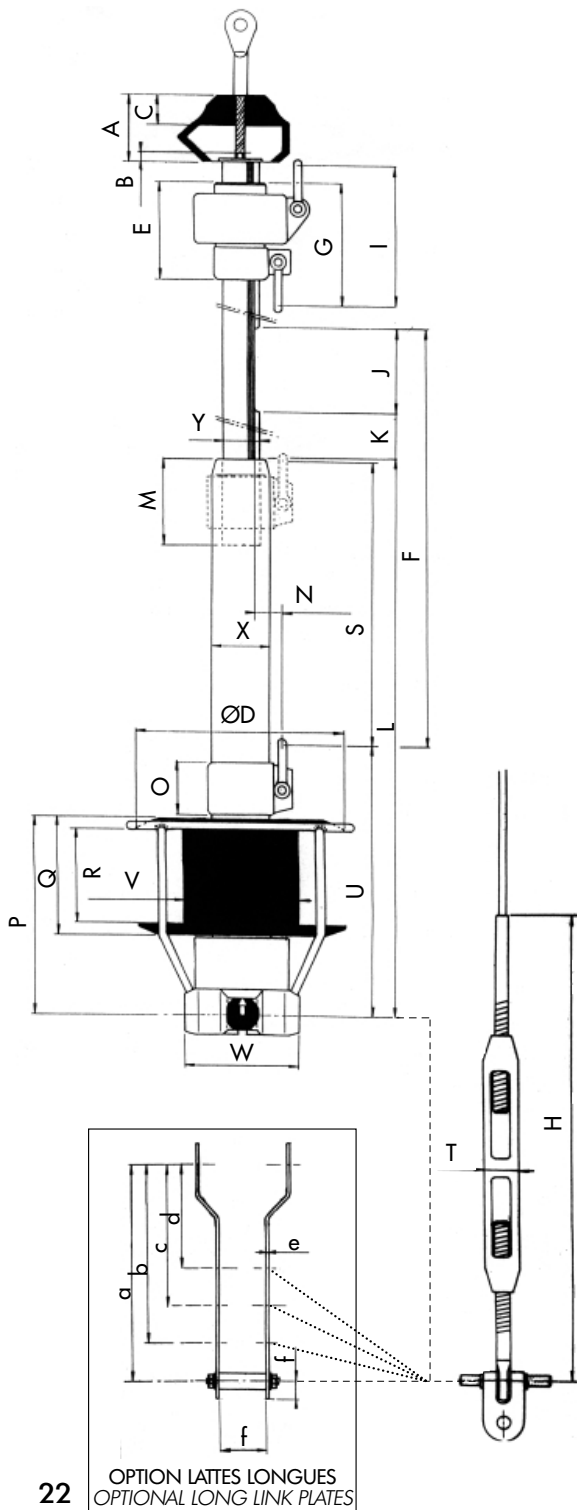
# PIECES DETACHEES POUR B35 S -L - M

## SPARE PARTS FOR B35 S -L - M

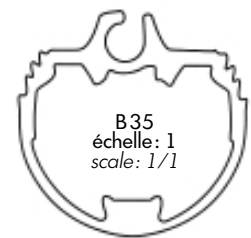
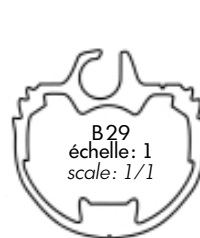


# DIMENSIONS POUR ENROULEURS BASIC B29/B35 S- L - M

## DIMENSIONS FOR BASIC B29/B35 S- L - M



	B 29 S		B 29 L		B 35 S		B 35 M		B 35 L	
	mm	ins	mm	ins	mm	ins	mm	ins	mm	ins
A	45	1 49/64"	45	1 49/64"	70	2 3/4"	70	2 3/4"	70	2 3/4"
B	10	25/64"	10	25/64"	10	25/64"	10	25/64"	10	25/64"
C	20	25/32"	20	25/32"	28	1 7/64"	28	1 7/64"	28	1 7/64"
D	120	4 47/64"	150	5 29/32"	170	6 11/16"	200	7 7/8"	220	8 43/64"
E	70	2 3/4"	70	2 3/4"	98	3 55/64"	98	3 55/64"	98	3 55/64"
F	365	1' 2 3/8"	475	1' 6 11/16"	680	2' 2 23/32"	680	2' 2 23/32"	760	2' 5 7/8"
G	90	3 35/64"	90	3 35/64"	128	5 3/64"	128	5 3/64"	128	5 3/64"
H max	320	1 19/32"	430	1' 4 15/16"	460	1' 6 3/32"	460	1' 6 3/32"	530	1' 8 7/8"
I	105	4 1/8"	105	4 1/8"	130	5 1/8"	130	5 1/8"	130	5 1/8"
J	100	3 15/16"	100	3 15/16"	150	5 29/32"	150	5 29/32"	150	5 29/32"
K	105	4 1/8"	105	4 1/8"	270	10 5/8"	270	10 5/8"	270	10 5/8"
L	400	1' 3 3/4"	510	1' 8 5/64"	540	1' 9 1/4"	540	1' 9 1/4"	610	2' 1/64"
M	75	2 61/64"	75	2 61/64"	80	3 5/32"	80	3 5/32"	80	3 5/32"
N	25	1"	25	1"	32	1 1/4"	32	1 1/4"	32	1 1/4"
O	45	1 49/64"	45	1 49/64"	50	1 31/32"	50	1 31/32"	50	1 31/32"
P	150	5 29/32"	150	5 29/32"	190	7 15/32"	190	7 15/32"	190	7 15/32"
Q	99	3 57/64"	99	3 57/64"	115	4 17/32"	115	4 17/32"	115	4 17/32"
R	80	3 5/32"	80	3 5/32"	95	3 3/4"	95	3 3/4"	95	3 3/4"
S	160	6 19/64"	255	10"	240	9 29/64"	240	9 29/64"	310	12 13/64"
T max	28	1 7/64"	28	1 7/64"	32	1 1/4"	32	1 1/4"	37	1 29/64"
U	210	8 17/64"	210	8 17/64"	265	10 7/16"	265	10 7/16"	265	10 7/16"
V	66	2 19/32"	66	2 19/32"	115	4 17/32"	115	4 17/32"	115	4 17/32"
W	97	3 13/16"	97	3 13/16"	115	4 17/32"	115	4 17/32"	115	4 17/32"
X	46	1 13/16"	46	1 13/16"	56	2 13/64"	56	2 13/64"	56	2 13/64"
Y	29	1 5/32"	29	1 5/32"	35	1 3/8"	35	1 3/8"	35	1 3/8"
a	175	6 57/64"	175	6 57/64"	203	7 63/64"	203	7 63/64"	203	7 63/64"
b	145	5 45/64"	145	5 45/64"	168	6 39/94"	168	6 39/94"	168	6 39/94"
c	115	4 17/32"	115	4 17/32"	133	5 15/64"	133	5 15/64"	133	5 15/64"
d	85	3 11/32"	85	3 11/32"	98	3 55/64"	98	3 55/64"	98	3 55/64"
e	4	5/32"	4	5/32"	4	5/32"	4	5/32"	4	5/32"
f	15	19/32"	15	19/32"	17	43/64"	17	43/64"	17	43/64"
g	35	13/8"	35	1 3/8"	45	1 25/32"	45	1 25/32"	45	1 25/32"



B29 & B35  
Diamètre de la ralingue finie: 5 mm  
Finished luff tape diameter: 5 mm (3/16")