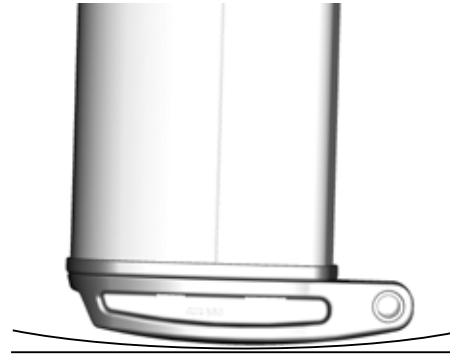
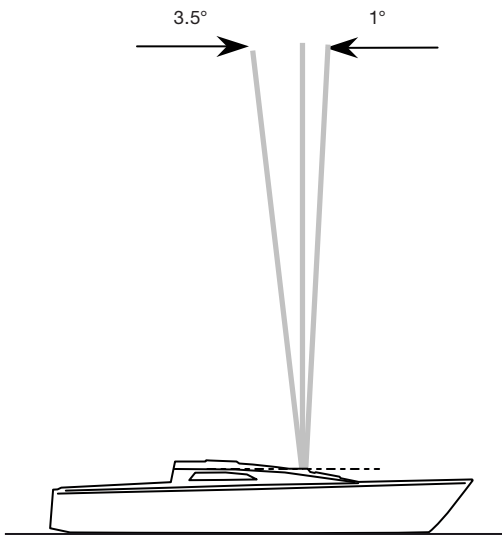


Deck-stepped masts

Load distribution

A convex heel plug at the lower end of the mast section allows the mast to be raked 3,5° aft and 1° forward, and still evenly transfer compression load to the mast section. This concept is far from new but nevertheless, brilliant. It was introduced by Seldén early 70's.



Convex heel plug distributes compression load evenly on the mast section.

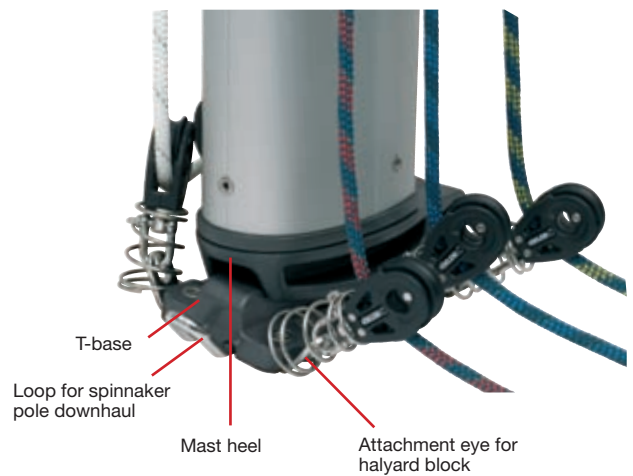
It is easy to step the mast

The aft end of the heel plug is connected to the T-base with a clevis pin. This clevis pin works as a hinge and allows for controlled raising and lowering of the mast, a great help for sailors who frequently un-step their mast. For the owner of a trailer boat the advantage is obvious.



T-base, heel and attachments for deck blocks

Ropes leaving the mast through halyard exits continue down and then lead aft to clutches, Cam cleats or Valley cleats® located within reach of the crew in the cockpit. The mast stands on an aluminium T-base, which is bolted to the deck. Six stainless attachment eyes, three on each side, can be fitted between the T-base and the deck for attachment of lead blocks. This enables ropes to be efficiently routed to the cockpit. In addition, the T-base comes with two centre line attachment loops, one forward and one aft. These loops are mainly used for spinnaker pole downhaul and the kicking strap.

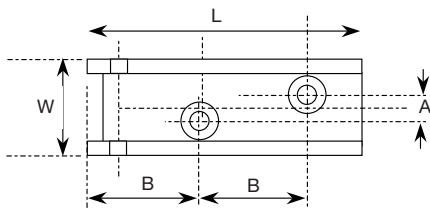


Mast heel without sheaves

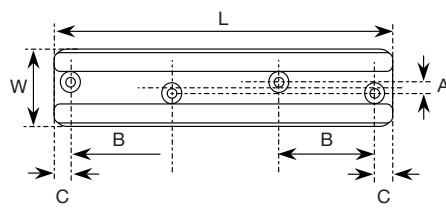
Mast section		Heel plug, Art. no.	T-base, Art. no.	Attachment eye, Art. no.	Loop, Art. no.	L mm	W mm	A mm	B mm
Aluminium	Carbon								
C080	CC077	502-560-01	❶ 510-158-01	-	-	100	35	10	40
		502-560-02 (sheaves)	❷ 510-155-01 (adjustable)	-	-	150	40	7	44
C087	CC086	502-561-01	❸ 510-161-01*	508-497	508-459	120	70	50	90
C096	CC095	502-562-01	❹ 510-171-01*			150	70	50	120
C106	CC105	502-563-01							
C116	CC115	502-564-01							
C126	CC125	502-565-01							
C139	CC138	502-566-01							

*Including attachment eyes and loops.

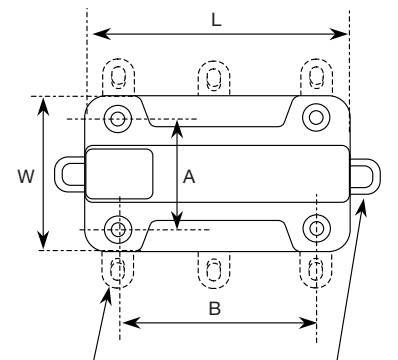
❶ T-Base



❷ Adjustable T-base



❸ ❹ T-Base, attachment eye and loop



Attachment eye,
Art. no. 508-497

Loop,
Art. no. 508-459



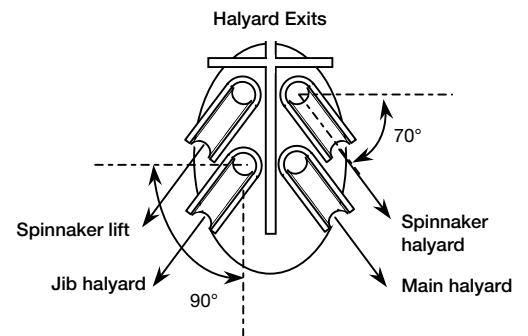
Read more about Seldén's blocks, Cam cleats and Valley cleats® in our Deck Hardware catalogue, art. no. 595-905-E.

Mast heel with integrated sheaves

An alternative to halyard exit slots is to run the halyards out through the mast heel. Seldén offers this solution by adding a fitting with four integrated sheaves between the mast section and the heel. The sheaves are fitted in adjustable cages that can be individually angled towards a deck organiser or direct to a Cam Cleat in the cockpit area. In the top of the stainless cages, rubber o-rings preserve the cage alignment when the rope is unloaded. They also prevent rattling.

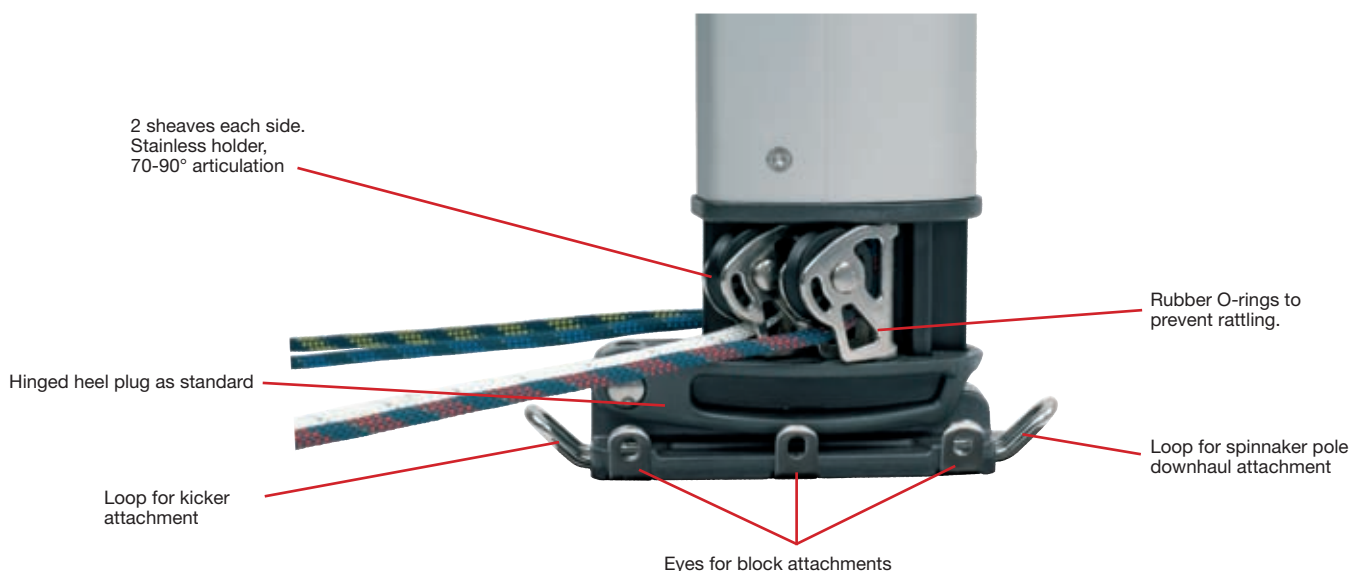
Ball bearing sheaves are available for some of the sections.

When needed, additional attachment eyes and loops can be fitted underneath the T-base.



Mast heel with sheaves

Mast section		Mast heel with four plain bearing sheaves, Art. no.	Mast heel with four ball bearing sheaves Art. no.	Height of ropes above deck
Aluminium	Carbon	Aluminium/Carbon		mm
C080	CC077	502-560-02	-	33
C087	CC086	502-561-02/-52	502-561-03	50
C096	CC095	502-562-02/-52	502-562-03	
C106	CC105	502-563-02/-52	502-563-03	
C116	CC115	502-564-02/-52	502-564-03	
C126	CC125	502-565-02/-52	-	52
C139	CC138	502-566-02/-52	-	



Keel-stepped masts

The aluminium deck ring comes with six stainless attachment eyes, three on each side. Blocks for halyards are attached to the eyes to lead ropes back to the cockpit. There are also two stainless loops fitted to the deck ring, one forward and one aft. These are intended for the spinnaker pole downhaul and kicking strap.

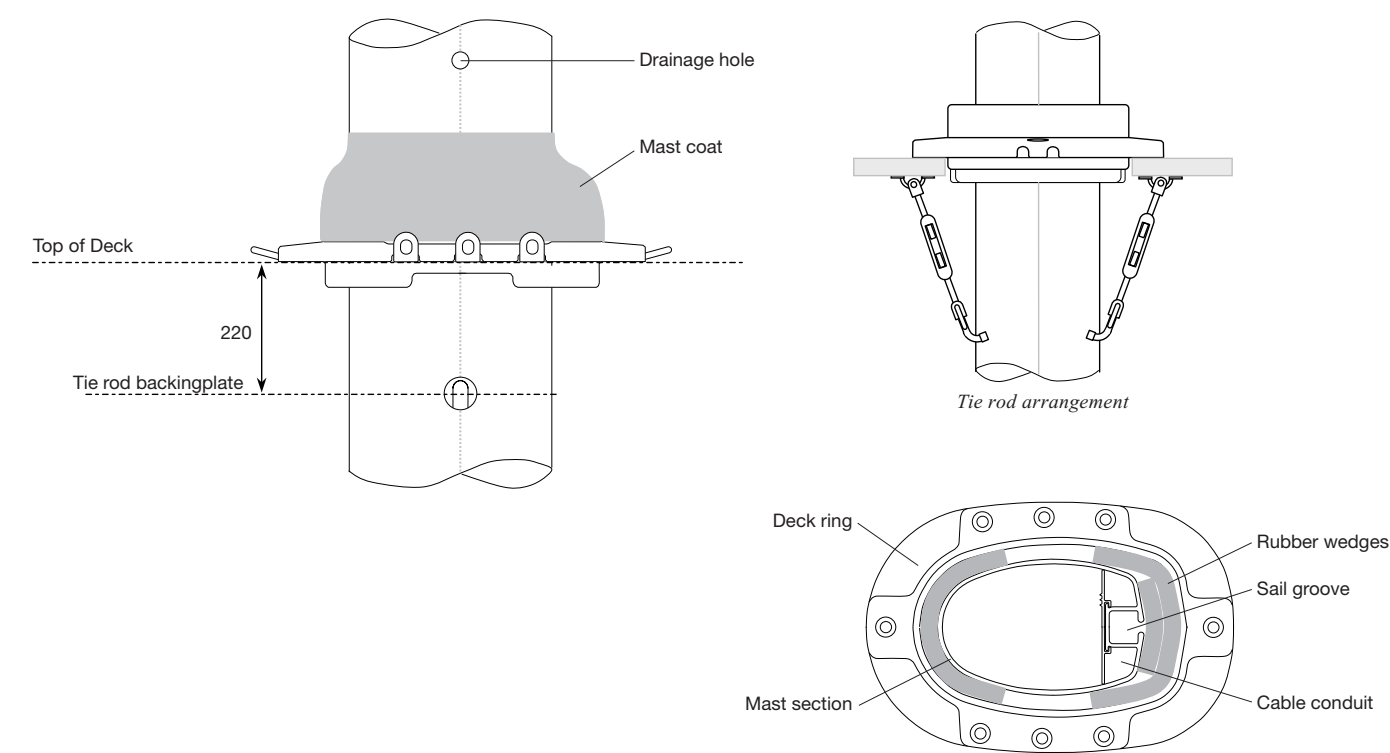
The mast is secured in the deck ring by rubber wedges.

To prevent lifting the deck by the halyard loads, Tie-rods are fitted in backing plates in the mast section and connected by rigging screws to attachment loops in the solid deck laminate.

A keel-stepped mast has, as standard, an internal seal in order to minimise water leaking into the bilge. The cable conduits are open to simplify installation of additional cables but they can be sealed afterwards if required. Externally, a flexible mast coat prevents water leaking through the deck.

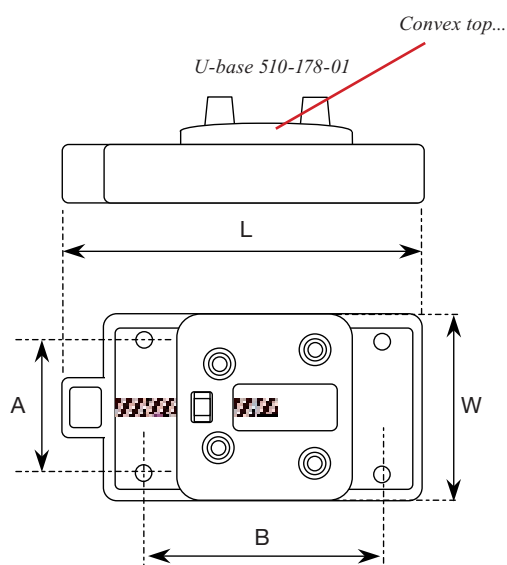
Deck ring

Mast section		T-Base, Art. no.	Deck ring including attachment eyes, loops, backing plates for Tie-rods and rubber wedges, Art. no.	Mast coat, Art. no.	Hose clip, Art. no.	Attachment eyes, Art. no.	Loops, Art. no.	Rubber wedges, Art. no.
Aluminium	Carbon							
C116	CC115	510-171	533-034-01	530-063	312-202	508-497	508-459	2 x 530-239 2 x 530-240
C126	CC125	-		530-064				2 x 530-239 1 x 530-240
C139	CC138	-		530-065				2 x 530-239

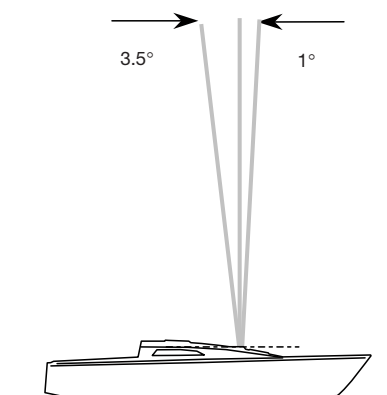


U-base

Mast section		U-base, Art. no.	L mm	W mm	A mm	B mm
Aluminium	Carbon					
C126	CC125	510-178-01	180	85	50	120
C139	CC138					



... allows the mast to be raked 3,5° aft and 1° forward, and still evenly transfer compression load to the mast section.



Adjustable mast heel (C126-C139, CC125-CC138)

The U-Base allows for +/- 25 mm longitudinal adjustment of the mast heel. Pre bend and rake can therefore be trimmed for ultimate performance.

Differing from deck stepped masts, the heel plug has a straight lower edge, whereas the upper part of the U-base is convex. The mast can be raked 3.5° aft and 1° forward without subjecting the mast section to uneven compression loads.

